



**ELECTRICAL AND DATA CABLE INSTALLATION**

**for**

**Washington Metropolitan Area Transit Authority**

**Contract Number FQ17021**

**VOLUME 3**

**Drawings Part 2b  
AFC Mezzanine Plans  
Green and Yellow Lines**

**November 13, 2016**

**Final Submission**

**WASHINGTON METROPOLITAN AREA TRANSIT AUTHORITY**

**VOLUME 3**

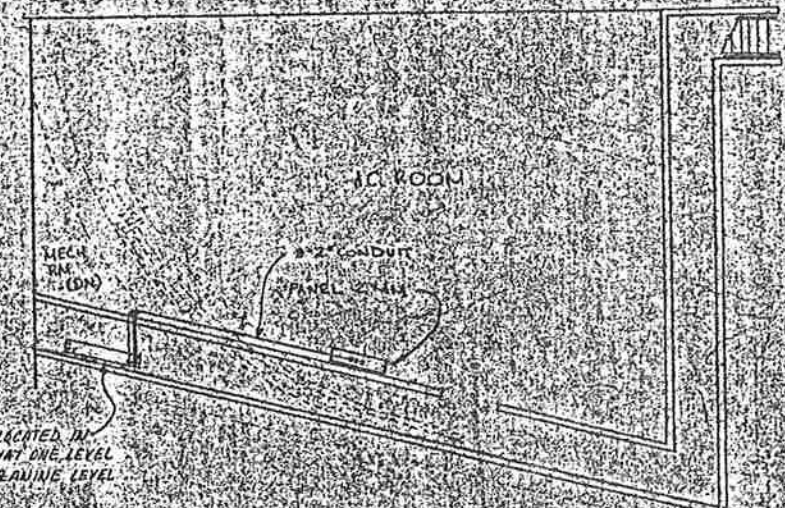
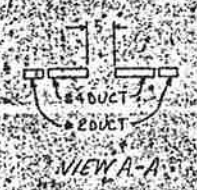
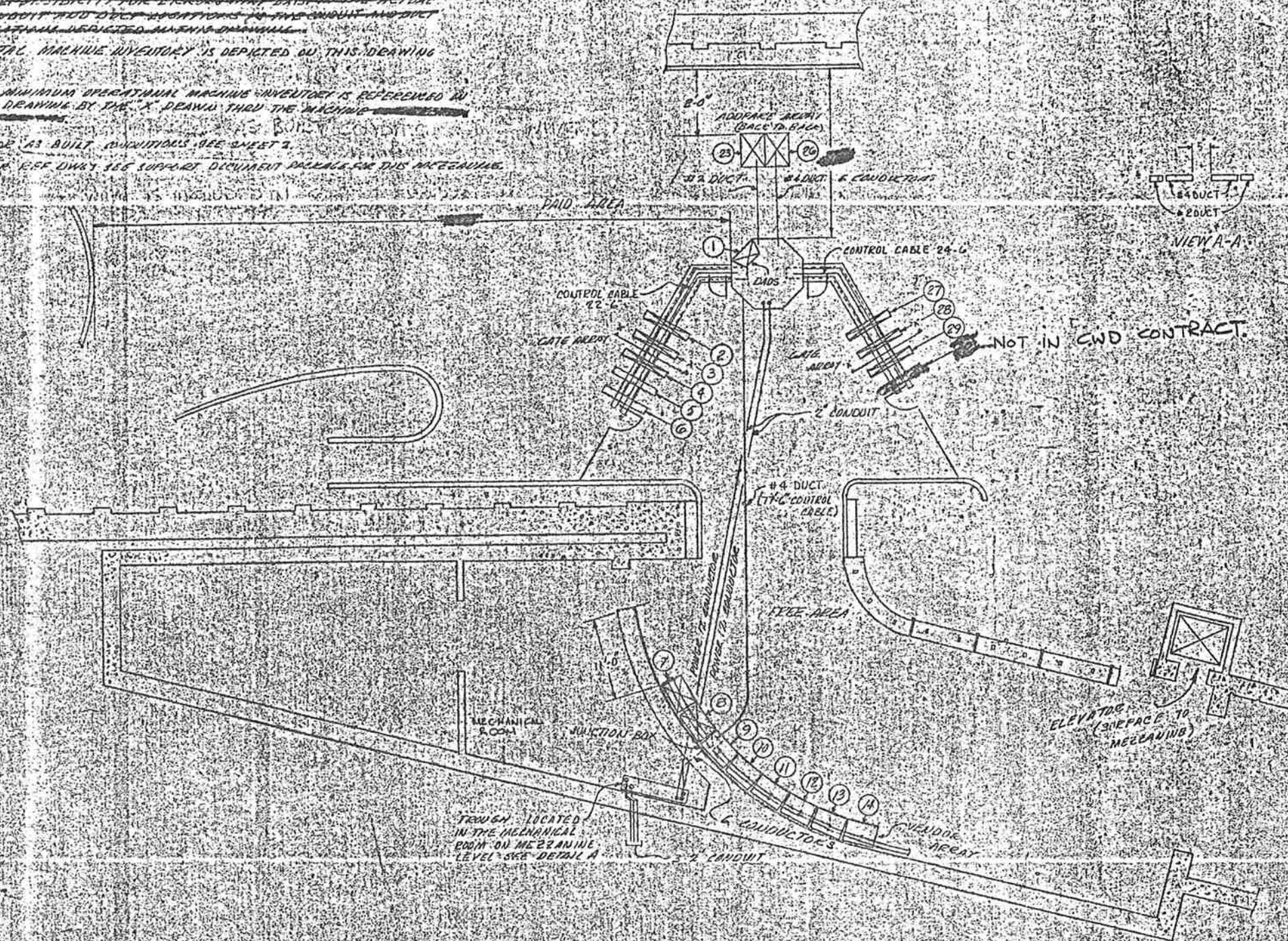
**PAGE NO.**

**DRAWINGS PART 2B  
AFC MEZZANINE PLANS  
GREEN & YELLOW LINES  
TABLE OF CONTENTS**

1	MP_C09_CRYSTAL CITY_MZ045	3
2	MP_C10_REAGAN NATIONAL AIRPORT (SOUTH MEZZ)_MZ046	6
3	MP_C10_REAGAN NATIONAL AIRPORT (NORTH MEZZ)_MZ093	
4	MP_C10_REAGAN NATIONAL AIRPORT (MINI MEZZ)_MZ093M	
5	MP_C12_BRADDOCK ROAD_MZ047	8
6	MP_C13_KING STREET-OLD TOWN_MZ048	10
7	MP_C13_KING STREET-OLD TOWN (NEW ENTRANCE)_MZ048M	
8	MP_C13_KING STREET-OLD TOWN (NORTH MEZZ)_MZ112	
9	MP_C15_HUNTINGTON (NORTH MEZZANINE)_MZ050	12
10	MP_C15_HUNTINGTON (SOUTH MEZZANINE)_MZ051	14
11	MP_E01_MOUNT VERNON SQUARE_MZ070	16
12	MP_E02_SHAW-HOWARD U (SOUTH MEZZANINE)_MZ071	18
13	MP_E02_SHAW-HOWARD U (NORTH MEZZANINE)_MZ072	20
14	MP_E03_U STREET (EAST MEZZANINE)_MZ073	22
15	MP_E03_U STREET (WEST MEZZANINE)_MZ074	24
16	MP_E05_GEORGIA AVENUE_MZ076	
17	MP_E07_WEST HYATTSVILLE_MZ077	27
18	MP_E08_PRINCE GEORGE'S PLAZA_MZ078	29
19	MP_E09_COLLEGE PARK_MZ079	30
20	MP_E10_GREENBELT_MZ080	34
21	MP_F02_ARCHIVES_MZ081	38
22	MP_F03_L'ENFANT PLAZA (NORTH MEZZANINE)_MZ082	40
23	MP_F04_WATERFRONT_MZ083	42
24	MP_F05_NAVY YARD-BALLPARK (WEST MEZZANINE)_MZ105	46
25	MP_F06_ANACOSTIA (NORTH MEZZANINE)_MZ085	49
26	MP_F06_ANACOSTIA (SOUTH MEZZANINE)_MZ106	52
27	MP_F07_CONGRESS HEIGHTS_MZ086	
28	MP_F08_SOUTHERN AVENUE_MZ107	
29	MP_F09_NAYLOR ROAD_MZ087	
30	MP_F11_BRANCH AVENUE_MZ089	



- NOTES:
1. ALL INFORMATION CONCERNING DUCTS AND CONDUITS IS BASED ON INFORMATION SUPPLIED TO CUBIC WESTERN DATA BY WINTATA. CUBIC WESTERN DATA ASSUMES NO RESPONSIBILITY FOR ERRORS THAT MAY OCCUR IN THE DUCT AND CONDUIT LOCATIONS IN THIS CONDUIT AND DUCT LOCATIONS DEPICTED IN THIS DRAWING.
  2. TOTAL MACHINE INVENTORY IS DEPICTED ON THIS DRAWING.
  3. THE MINIMUM OPERATIONAL MACHINE INVENTORY IS REFERENCED IN THIS DRAWING BY THE "X" DRAWN THRU THE MACHINE.
  4. SEE AS BUILT CONDITIONS SEE SHEET 2.
  5. FOR SEE DWG. SEE SUPPORT DOCUMENT PACKAGE FOR THIS DRAWING.

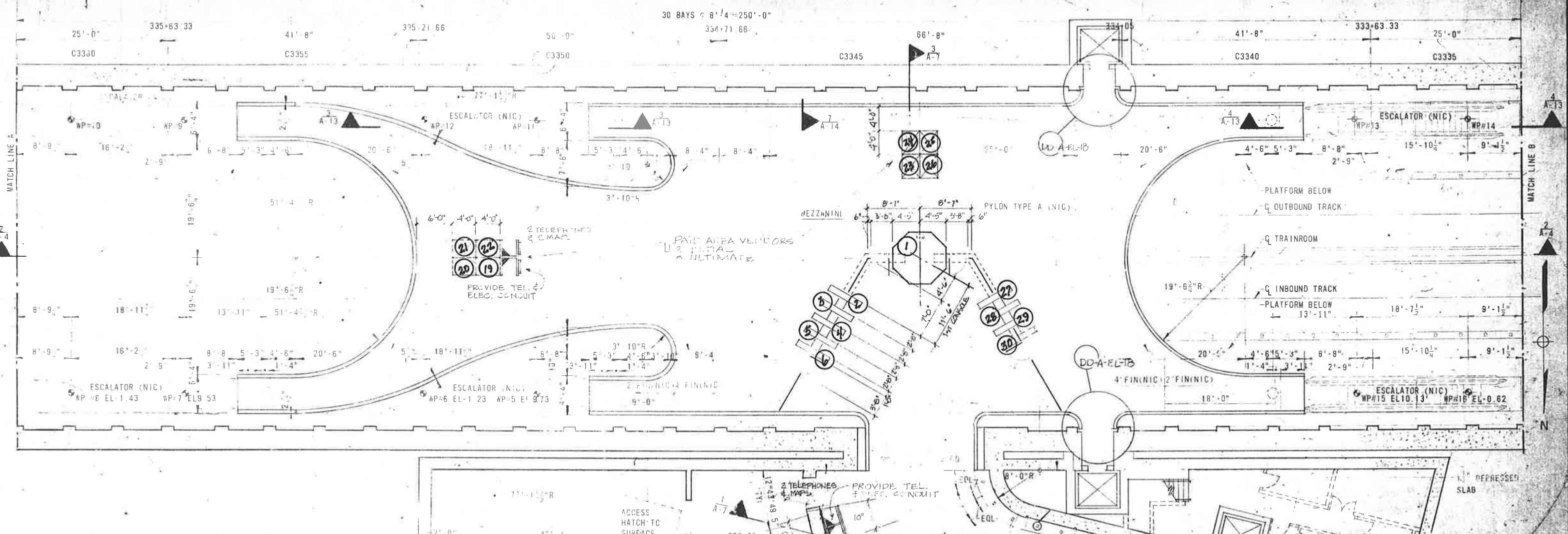


PRIMEITY REQUESTS: SEE REPORT GIVEN FOR BOTH ESCALATORS (STREET TO HALL & HALL TO MEZANINE) AND THE ELEVATORS THAT RUN FROM THE STREET LEVEL TO THE MEZANINE.

-1 INSTALLATION PLAN-

WASHINGTON METROPOLITAN AREA TRANSIT AUTHORITY  
 APPROVED AS CORRECTED  
 RESUBMITTAL REQUIRED  
 Approval does not constitute the Contractor of the responsibility for the accuracy of this document or for full compliance with the Contract requirements.  
 BY: Patrick S. Bine  
 For Contracting Officer  
 DATE: 11-1-76

CP 23007A-103-2-1  
**WASHINGTON METROPOLITAN AREA TRANSIT AUTHORITY**  
 CUBIC WESTERN DATA  
 CRYSTAL CITY STATION  
 A/C MACHINES  
 CONTRACT NUMBER: [ ]  
 DRAWING NUMBER: 986-0376  
 SHEET: 11 OF 11

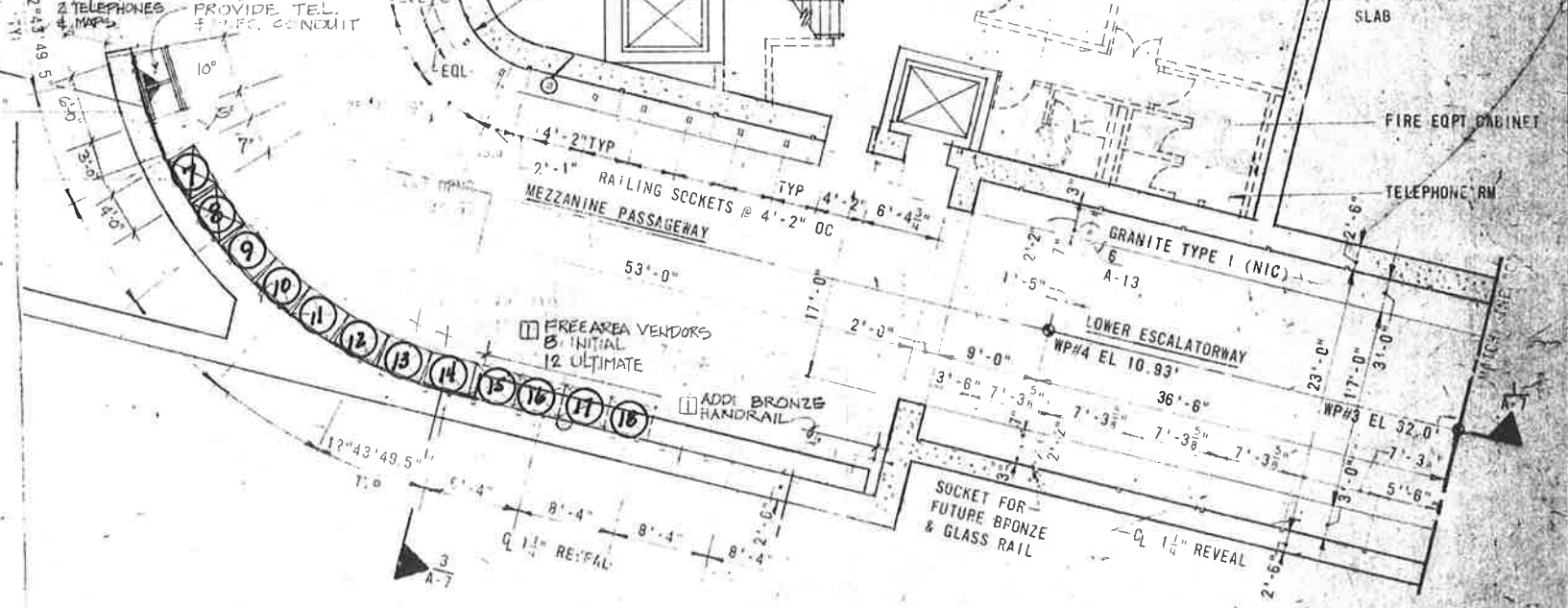


**MEZZANINE PLAN & ENTRANCE SERVICE AREA**

SCALE 1"=0'

POSITION NUMBER	EQUIPMENT IDENTIFICATION			POSITION NUMBER	EQUIPMENT IDENTIFICATION		
	INITIAL	ULTIMATE	MIN. OPNL.		INITIAL	ULTIMATE	MIN. OPNL.
1	DADS	DADS	DADS	21	TRANSFER VALIDATOR	TRANSFER VALIDATOR	
2	END A	END A		22	TRANSFER VALIDATOR	TRANSFER VALIDATOR	
3	REV	REV		23	TRANSFER VALIDATOR	TRANSFER VALIDATOR	
4	REV	REV		24	TRANSFER VALIDATOR	TRANSFER VALIDATOR	
5	REV	REV		25	TRANSFER VALIDATOR	TRANSFER VALIDATOR	
6	EXIT	EXIT		26	ADDFARV	ADDFARV	
7	FANCTAP VENDOR	FANCTAP VENDOR		27	END B	END D	
8	FANCTAP VENDOR	FANCTAP VENDOR		28	REV	REV	
9	FANCTAP VENDOR	FANCTAP VENDOR		29	ENTRY	REV	
10	FANCTAP VENDOR	FANCTAP VENDOR		30		ENTRY	
11	FANCTAP VENDOR	FANCTAP VENDOR		31			
12	FANCTAP VENDOR	FANCTAP VENDOR		32			
13	FANCTAP VENDOR	FANCTAP VENDOR		33			
14	FANCTAP VENDOR	FANCTAP VENDOR		34			
15	FANCTAP VENDOR	FANCTAP VENDOR		35			
16	FANCTAP VENDOR	FANCTAP VENDOR		36			
17	FANCTAP VENDOR	FANCTAP VENDOR		37			
18	FANCTAP VENDOR	FANCTAP VENDOR		38			
19	FANCTAP VENDOR	FANCTAP VENDOR		39			
20	FANCTAP VENDOR	FANCTAP VENDOR		40			
				41			

SK-792 CRYSTAL CITY



**KEY PLAN**

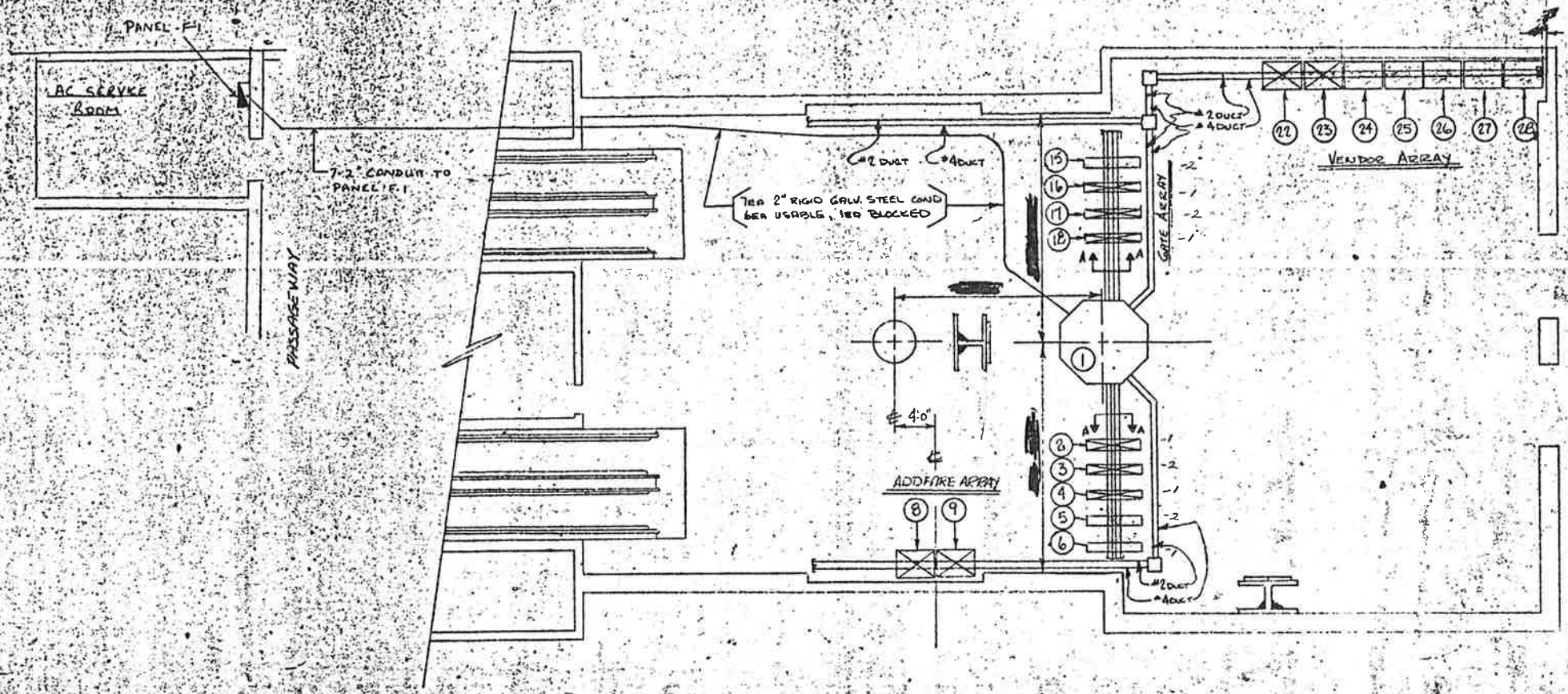
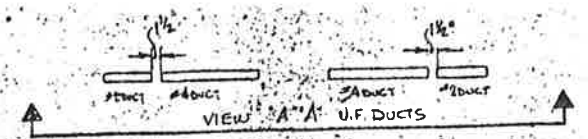
RECEIVED  
MAY 19 1978  
BECHTEL SYSTEMWIDE

NO.	DATE	BY	DESCRIPTION
1	12-78	JDT	REVISED DRAWING
2	1-79	JDT	REVISED DRAWING
3	1-79	JDT	REVISED DRAWING
4	1-79	JDT	REVISED DRAWING

NOTATION CONCERNING DUCTS AND CONDUITS IS BASED  
 ON INFORMATION SUPPLIED TO CUBIC WESTERN DATA BY W.M.A.T.A.

QUANTITY IS DEPICTED ON THIS DRAWING. FOR UNUSUAL  
 QUANTITIES, REFER TO QUANTITIES LISTED DURING THE PREPARATION FOR THIS OF  
 INITIAL QUANTITIES WERE GIVEN TO C.W.D. ON 8/1/58  
 MINIMUM OPERATIONAL MACHINE INVENTORY IS REPRODUCED  
 DRAWING BY THE DRAWER THROUGH THE MACHINE

SEE BUILT CONTINUATION SEE DRAWING NO. 2 INST. PLAN  
 REFER TO DRAWINGS SEE SUPPORT DOCUMENT PACKAGE  
 THIS MECHANICAL



No. 1 INSTALLATION PLAN  
 SCALE: 1/8" = 1'-0" U.O.N. 46

CP-27007A-104-2-0

WASHINGTON METROPOLITAN  
 AREA TRANSIT AUTHORITY

**M** metro  
 WASHINGTON METROPOLITAN  
 AREA TRANSIT AUTHORITY  
 APPROVED AS CORRECTED  
 (RESUBMITTAL REQUIRED)  
 Approval Does Not Relieve the Contractor  
 of the Responsibility for the Accuracy of  
 this Document or for Full Compliance  
 with the Contract Requirements.  
 BY: *Patrick S. Burns*

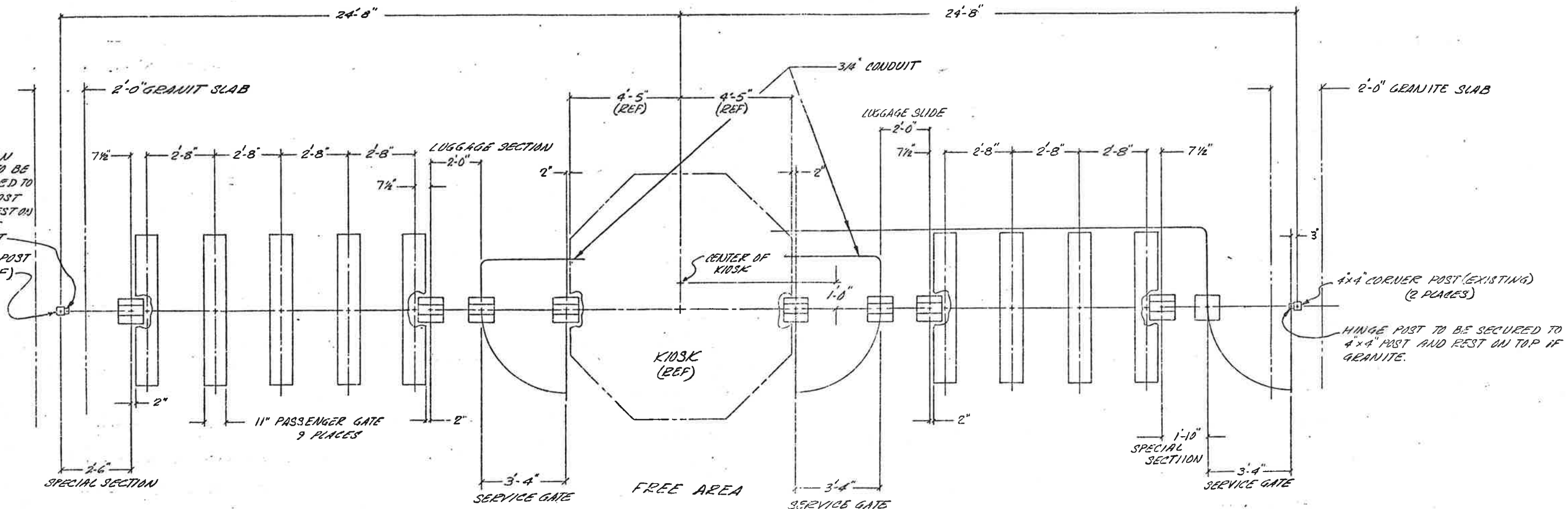
CONTRACT NUMBER 27007A		CUBIC WESTERN DATA A Subsidiary of Cubic Corporation 1000 W. 10th Street, Suite 100, San Diego, CA 92101	
NATIONAL AIRPORT R.F.C. MACHINES		DRAWING NUMBER	
DESIGN	APPROVAL	SIZE	REV

6430-0379

NOTES: UNLESS OTHERWISE SPECIFIED

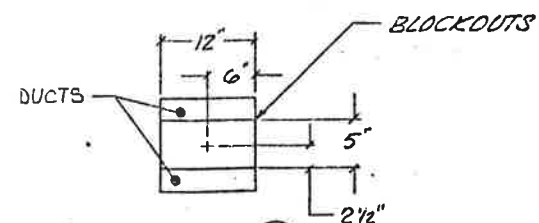
REVISIONS			
ZONE	LTR	DESCRIPTION	DATE

PAID AREA

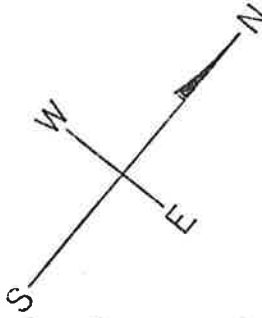


SECTION POST TO BE SECURED TO 4x4 POST AND REST ON TOP OF GRANITE  
 4x4 POST (REF)

4x4 CORNER POST (EXISTING) (2 PLACES)  
 HINGE POST TO BE SECURED TO 4x4 POST AND REST ON TOP IF GRANITE.



DETAIL A  
 7 PLACES  
 SCALE 1" = 1'-0"



UNLESS OTHERWISE SPECIFIED LINEAR DIMENSIONS ARE IN INCHES TOL ON DECIMALS .XX ± .03 .XXX ± .010 ± 30'	SPECIFIED LINEAR DIMENSIONS ARE IN INCHES TOL ON ANGLES ± 30'	CONTRACT NUMBER 22007A	 SAN DIEGO, CALIFORNIA
UNLESS OTHERWISE SPECIFIED HOLE TOLERANCES ARE:			
HOLE DIA	TOLERANCES		NATIONAL AIRPORT STATION SERVICE GATES & MAILING
.015 THRU .125	+ .004 - .001		
.126 THRU .250	+ .005 - .001		
.256 THRU .500	+ .008 - .001		
.501 THRU .750	+ .009 - .001		
.751 THRU 1.000	+ .010 - .001		
		DESIGN ACTIVITY APPROVAL	SIZE 10 1/2" x 11 1/2"
		APPROVED	DRAWING NUMBER 926-0307
			SCALE 1/4" = 1'-0"
			SHEET

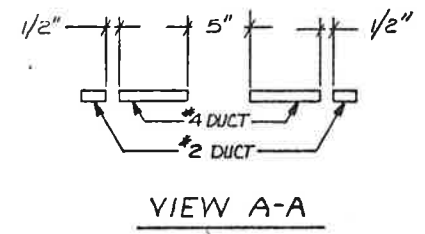
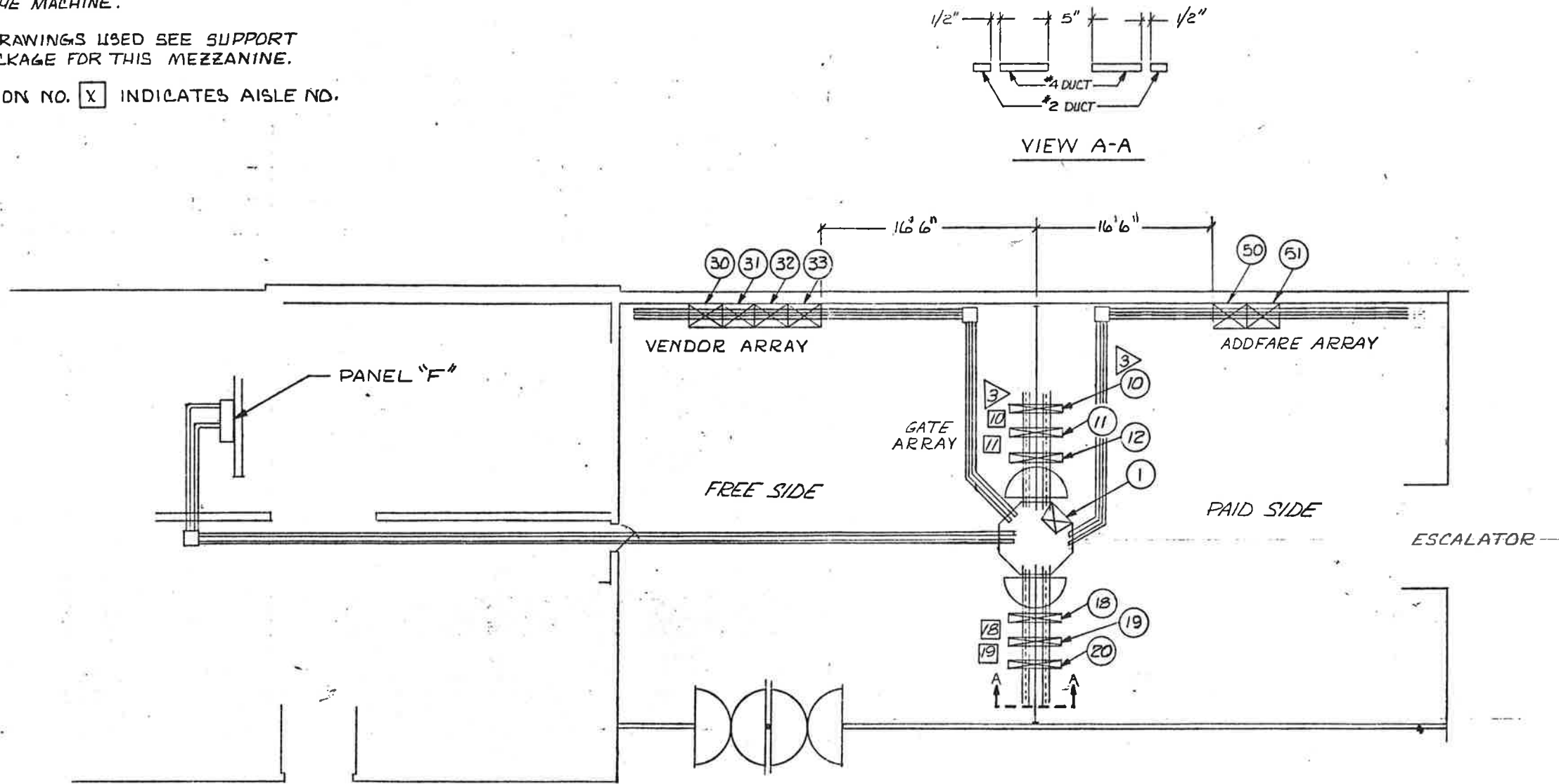
926-0307

A

46

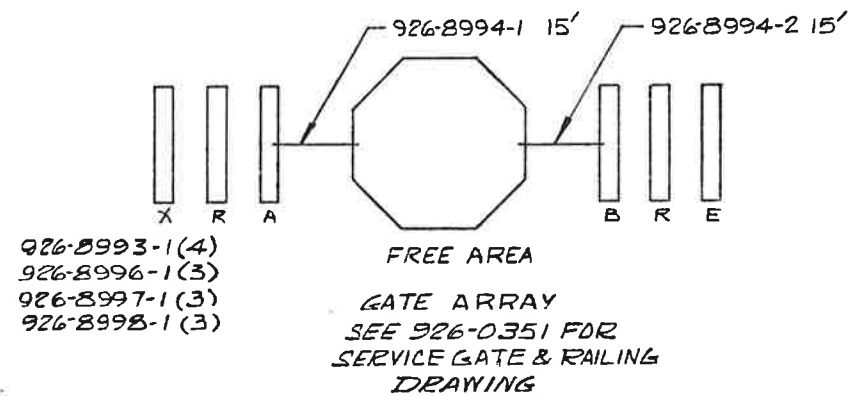
NOTES

1. THE MINIMUM OPERATIONAL MACHINE INVENTORY IS REFERENCED ON THIS DRAWING BY THE "X" DRAWN THROUGH THE MACHINE.
  2. FOR REFERENCE DRAWINGS USED SEE SUPPORT DOCUMENTATION PACKAGE FOR THIS MEZZANINE.
- ⊗ (X) INDICATES POSITION NO. [X] INDICATES AISLE NO.



PANEL F					
POSITION NO.	MACHINE TYPE	SERIAL NO.	CIRCUIT BREAKER NO.	BREAKER SIZE (AMPS)	WIRE SIZE (AWG)
1	DADS	DS8070	KIOSK	20	
10	EXIT GATE	GX 4074	7	20	6
11	REV GATE	GR 7263	9	20	6
12	A GATE	GA 5048	11	20	6
18	B GATE	GB 6055	8	20	6
19	REV GATE	GR 7255	10	20	6
20	ENTRYGATE	GN 3073	12	20	6
30	VENDOR	FV 1315	20	20	8
31	VENDOR	FV 1328	18	20	8
32	VENDOR	FV 1338	16	20	8
33	VENDOR	FV 1327	14	20	8
50	ADDFARE	AM 2132	24	20	8
51	ADDFARE	AM 2125	22	20	8

- 1 INSTALLATION PLAN



DO NOT SCALE DRAWING  
UNLESS OTHERWISE SPECIFIED  
BREAK SHARP EDGES .010 MAX  
DIMENSIONS ARE IN INCHES  
TOLERANCES ON ANGLES: ± 0.5 DEG.  
HOLES  
.0135 THRU .125: +.004 - .001  
.251 THRU .500: +.006 - .001  
.501 THRU .750: +.008 - .001  
.751 THRU 1.000: +.010 - .001

REV: 0-0-0  
REV: 1-1-1  
REV: 2-2-2  
REV: 3-3-3  
REV: 4-4-4  
REV: 5-5-5  
REV: 6-6-6  
REV: 7-7-7  
REV: 8-8-8  
REV: 9-9-9  
REV: 10-10-10

CONTRACT NUMBER  
D R A1  
DRAWING NUMBER  
926-0420  
SHEET / OF /

TITLE  
INSTALLATION PLAN  
BRADDOCK ROAD STATION

CUBIC WESTERN DATA  
A Subsidiary of Cubic Corporation  
5650 NE ARMY AVENUE, MESA, ARIZONA 85205  
POST OFFICE BOX 80739 • SAN DIEGO, CA 92138

CODE IDENT NO.  
94987

D 926-0420  
DRAWN: J. L. HENDERSON  
CHECK: J. L. HENDERSON  
DESIGN: J. L. HENDERSON  
ENGINEER: J. L. HENDERSON  
APPROVAL: J. L. HENDERSON



DO NOT SCALE DRAWING	
UNLESS OTHERWISE SPECIFIED	BREAK SHARP EDGES .010 MAX
DIMENSIONS ARE IN INCHES	
TOLERANCES ON ANGLES: ± 0.5 DEG.	
TOLERANCES ON HOLES	
.015 THRU .125: +.004 - .001	.251 THRU .500: +.006 - .002
.126 THRU .250: +.005 - .001	.501 THRU .750: +.008 - .001
.751 THRU 1.000: +.010 - .001	

REV	DATE	BY	CHKD

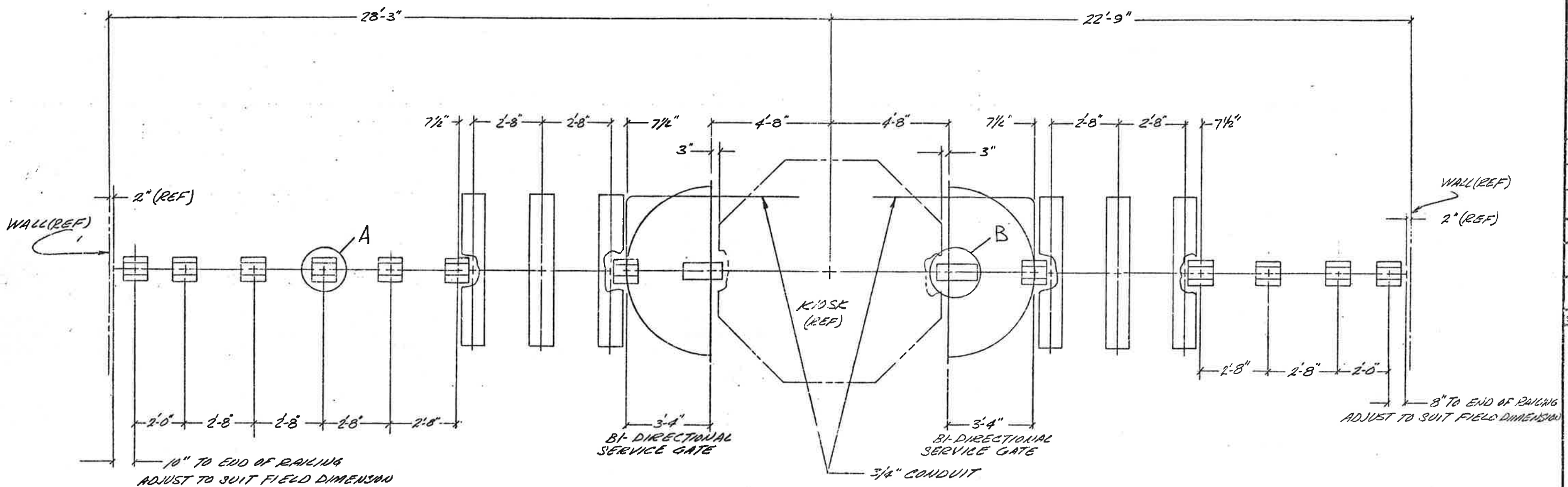
CONTRACT NUMBER	
SHEET	1 OF 1
DRAWING NUMBER	926-0351

**CUBIC WESTERN DATA**  
A Subsidiary of Cubic Corporation  
 5650 KEARNEY AVENUE, ROAD 4, POST OFFICE BOX 80707, SAN DIEGO, CA 92138

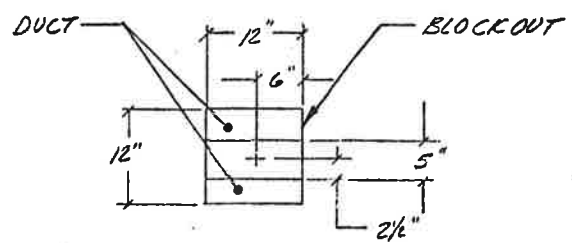
**TITLE**  
 BRADDOCK ROAD STATION  
 SERVICE GATE & RAILING

CODE IDENT NO.	94987
DRAWN	
CHECKED	
DESIGNED	
ENGINEER	
APPROVAL	

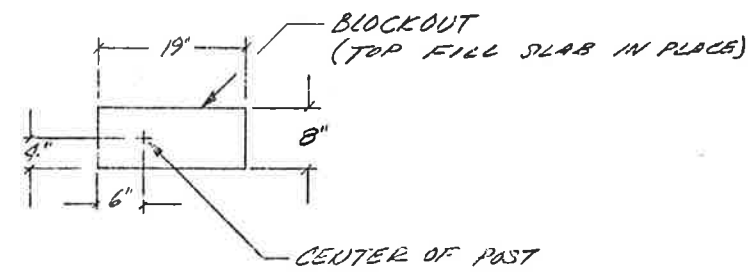
PAID AREA



FREE AREA



DETAIL A  
 11 PLACES  
 SCALE 1" = 1'-0"

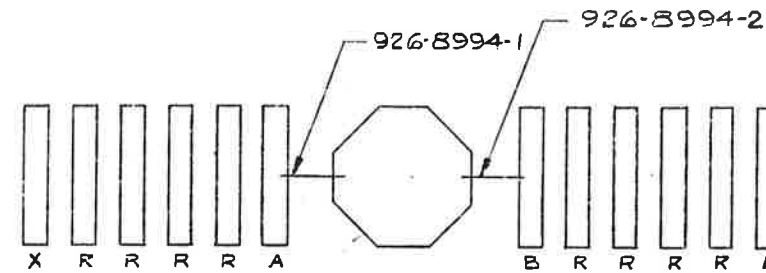
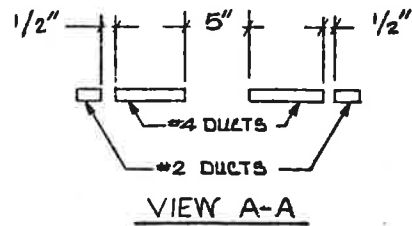


DETAIL B  
 2 PLACES  
 SCALE 1" = 1'-0"

SCALE 1/2" = 1'-0" REF DRAWING 926-0351-001

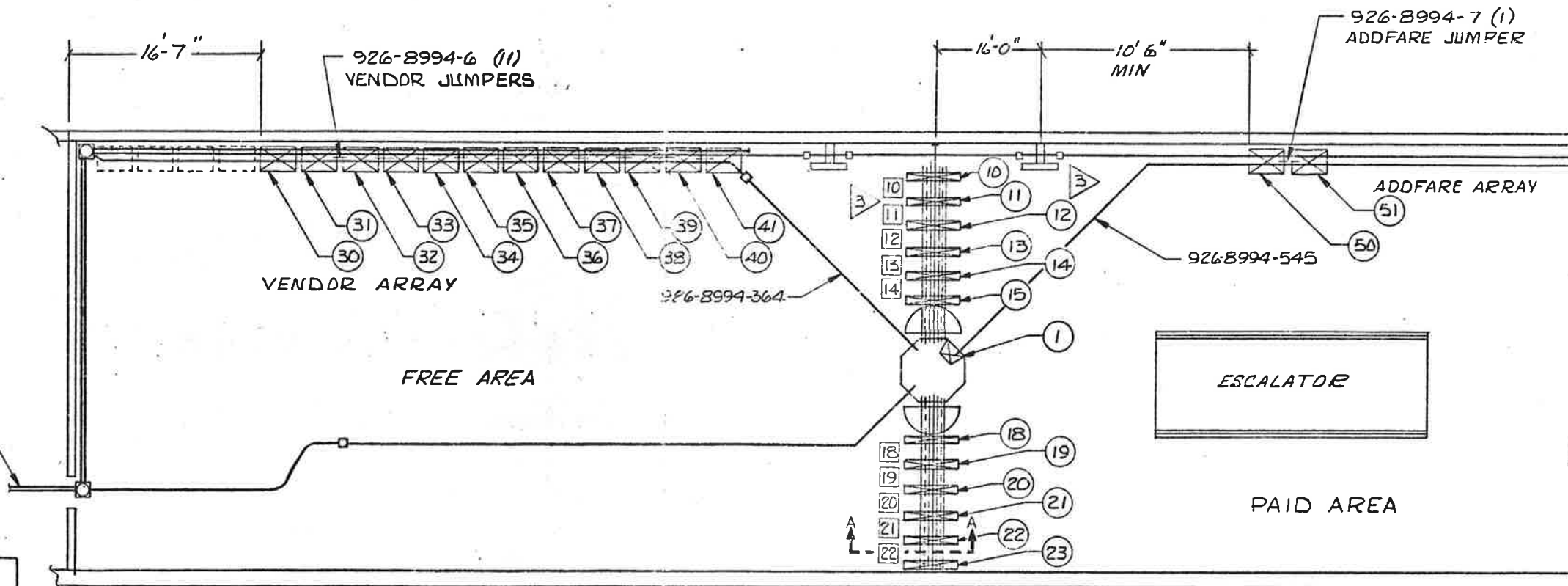
NOTES:

1. THE MINIMUM OPERATIONAL MACHINE INVENTORY IS REFERENCED ON THIS DRAWING BY THE "X" DRAWN THROUGH THE MACHINE.
  2. FOR REFERENCE DRAWINGS USED SEE SUPPORT DOCUMENTATION PACKAGE FOR THIS MEZZANINE.
- 3 (X) INDICATES POSITION NO. [X] INDICATES AISLE NO.



GATE ARRAY ROTATED 90° CCW  
SEE 926-0361 FOR SERVICE  
GATE & RAILING DRAWING  
FREE AREA

- 926-8998-1 (9)
- 926-8996-1 (9)
- 926-8997-1 (9)
- 926-8993-1 (10)



POSITION NO.	MACHINE TYPE	SERIAL NO.	PANEL F1/F2		
			CIRCUIT BREAKER NO.	BREAKER SIZE (AMPS)	WIRE SIZE (AWG)
1	DADS	8072	KIOSK	20	10
10	EXIT GATE	BX 4066	1	20	10
11	REV GATE	GR 7267	3	20	10
12	REV GATE	GR 7269	5	20	10
13	REV GATE	GR 7307	7	20	10
14	REV GATE	GR 7306	9	20	10
15	A GATE	GA 5049	11	20	10
18	B GATE	GB 6048	2	20	10
19	REV GATE	GR - 7268	4	20	10
20	REV GATE	GR - 7271	6	20	10
21	REV GATE	GR - 7270	8	20	10
22	REV GATE	GR - 7272	10	20	10
30	VENDOR	FV - 1047	1	20	8
31	VENDOR	FV - 1331	3	20	8
32	VENDOR	FV - 1317	5	20	8
33	VENDOR	FV - 1330	2	20	8
34	VENDOR	FV - 1324	4	20	8
35	VENDOR	FV - 1332	6	20	8
36	VENDOR	FV - 1310	7	20	8
37	VENDOR	FV - 1333	9	20	8
38	VENDOR	FV - 1325	11	20	8
39	VENDOR	FV - 1318	8	20	6
40	VENDOR	FV - 1291	10	20	6
41	VENDOR	FV - 1326	12	20	6
50	ADDFARE	AM - 2124	28	20	6
51	ADDFARE	AM - 2119	30	20	6
23	ENTRY	GN - 3075	12	20	10

-1 INSTALLATION PLAN

REDRAWN 7-27-82  
BY J. ETHERIDGE

DO NOT SCALE DRAWING  
UNLESS OTHERWISE SPECIFIED  
DIMENSIONS ARE IN INCHES  
TOLERANCES ON DIMENSIONS ON ANGLES: ± 0.5 DEG.  
HOLE SIZES: .015 THRU .125: +.004 - .001  
.126 THRU .250: +.005 - .001  
.251 THRU .500: +.006 - .001  
.501 THRU .750: +.008 - .001  
.751 THRU 1.000: +.010 - .001

CONTRACT NUMBER  
DRAWING NUMBER 926-0418  
SHEET 1 OF 1  
TITLE: INSTALLATION PLAN  
KING STREET STATION  
CUBIC WESTERN DATA  
A subsidiary of Cubic Corporation  
3600 KERRY WESLEY ROAD - POST OFFICE BOX 8078 - SAN DIEGO, CA 92114  
CODE IDENT NO. 94987  
DRAWN: J. ETHERIDGE  
CHECK: J.E.W.  
DESIGN: J.E.W.  
ENGR: R.D. RIDE  
APPROVAL: ANTHONY W. CUMMINS

926-0418 (48)

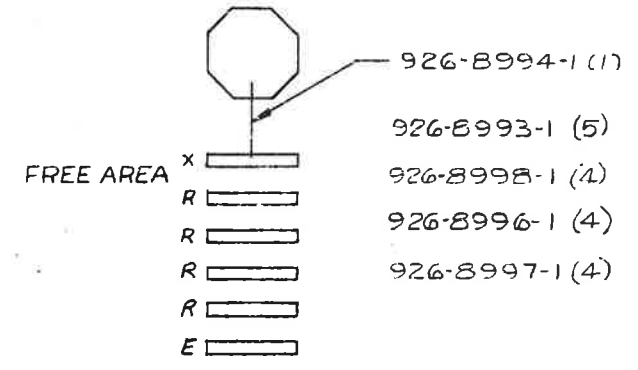
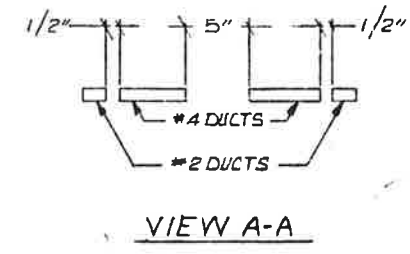




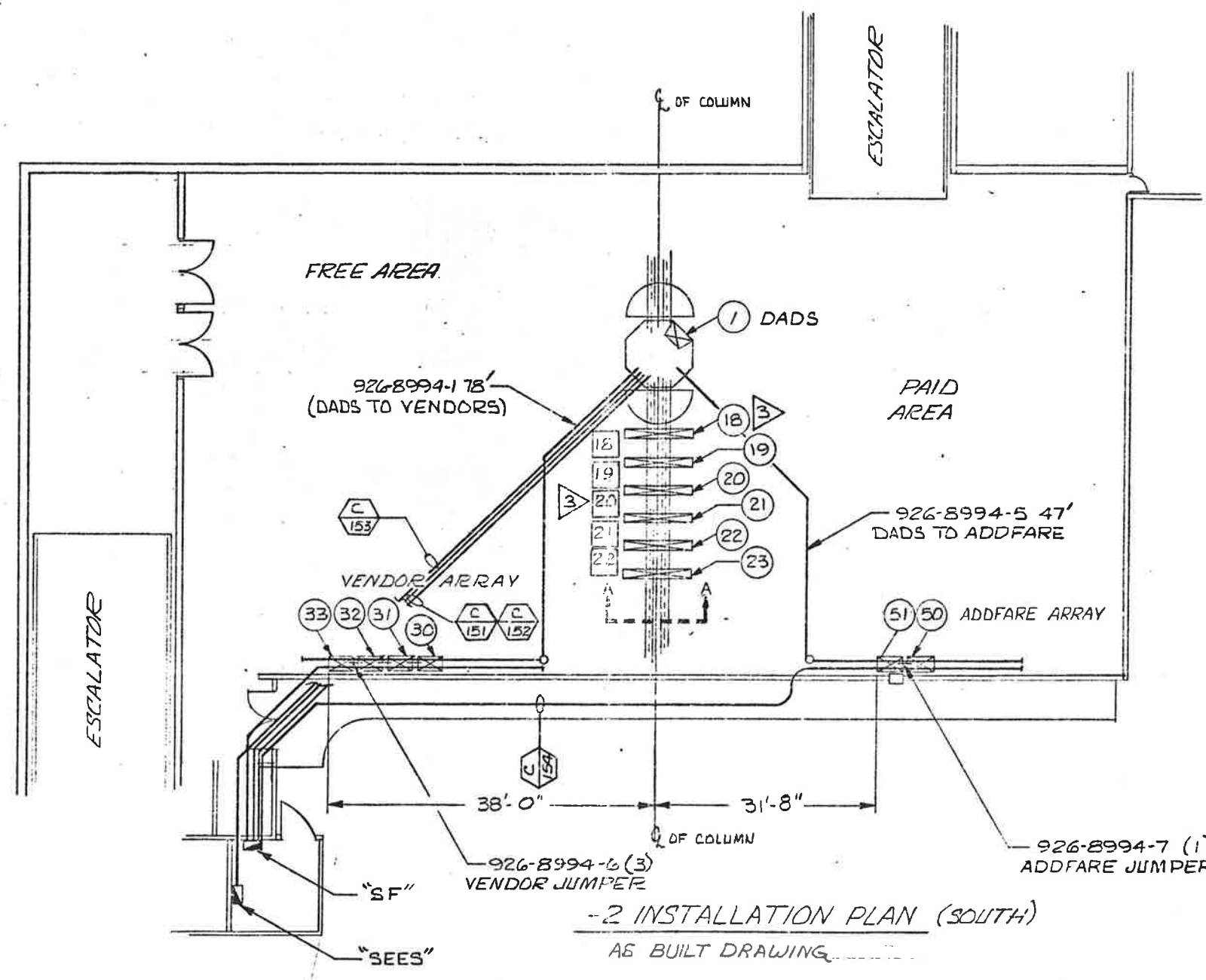


NOTES:

1. THE MINIMUM OPERATIONAL MACHINE INVENTORY IS REFERENCED ON THIS DRAWING BY THE "X" DRAWN THROUGH THE MACHINE.
  2. FOR REFERENCE DRAWINGS USED SEE SUPPORT DOCUMENTATION PACKAGE FOR THIS MEZZANINE.
- ⊙ INDICATES POSITION NO. ⊠ INDICATES AISLE NO.



GATE ARRAY  
SEE 926-0353 FOR SERVICE GATE & RAILING DRAWING



PANEL SF					
POSITION NO.	MACHINE TYPE	SERIAL NO.	CIRCUIT BREAKER NO.	BREAKER SIZE (AMPS)	WIRE SIZE (AWG)
1	DADS	DS 8067	KIOSK	20	
18	EXIT GATE	GX 4030	1	20	6
19	REVGATE	GR 7275	3	20	6
20	REVGATE	GR 7260	5	20	6
21	REVGATE	GR 7258	7	20	6
22	REVGATE	GR 7253	9	20	6
23	ENTRY GATE	GN 3001	11	20	6
30	VENDOR	FV 1354	2	20	8
31	VENDOR	FV 1346	4	20	8
32	VENDOR	FV 1339	6	20	8
33	VENDOR	FV 1345	8	20	8
50	ADDFARE	AM 2129	10	20	8
51	ADDFARE	AM 2127	12	20	8

-2 INSTALLATION PLAN (SOUTH)  
AS BUILT DRAWING

DO NOT SCALE DRAWING

UNLESS OTHERWISE SPECIFIED DIMENSIONS ARE IN INCHES

TOLERANCES ON BREAK SHARP EDGES .010 MAX

DECIMALS .XX ± .03 .XXX ± .010 ANGLES ± 0.5 DEG.

HOLES .015 THRU .125: +.004 - .001 .251 THRU .500: +.006 - .001 .501 THRU .750: +.008 - .001 .751 THRU 1.000: +.010 - .001

REV	DATE	APP'D	REV

CONTRACT NUMBER

DRAWING NUMBER 926-0417

SHEET 2 OF 2

TITLE

INSTALLATION PLAN HUNTINGTON STATION SOUTH

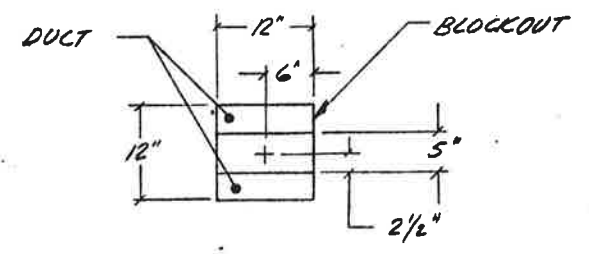
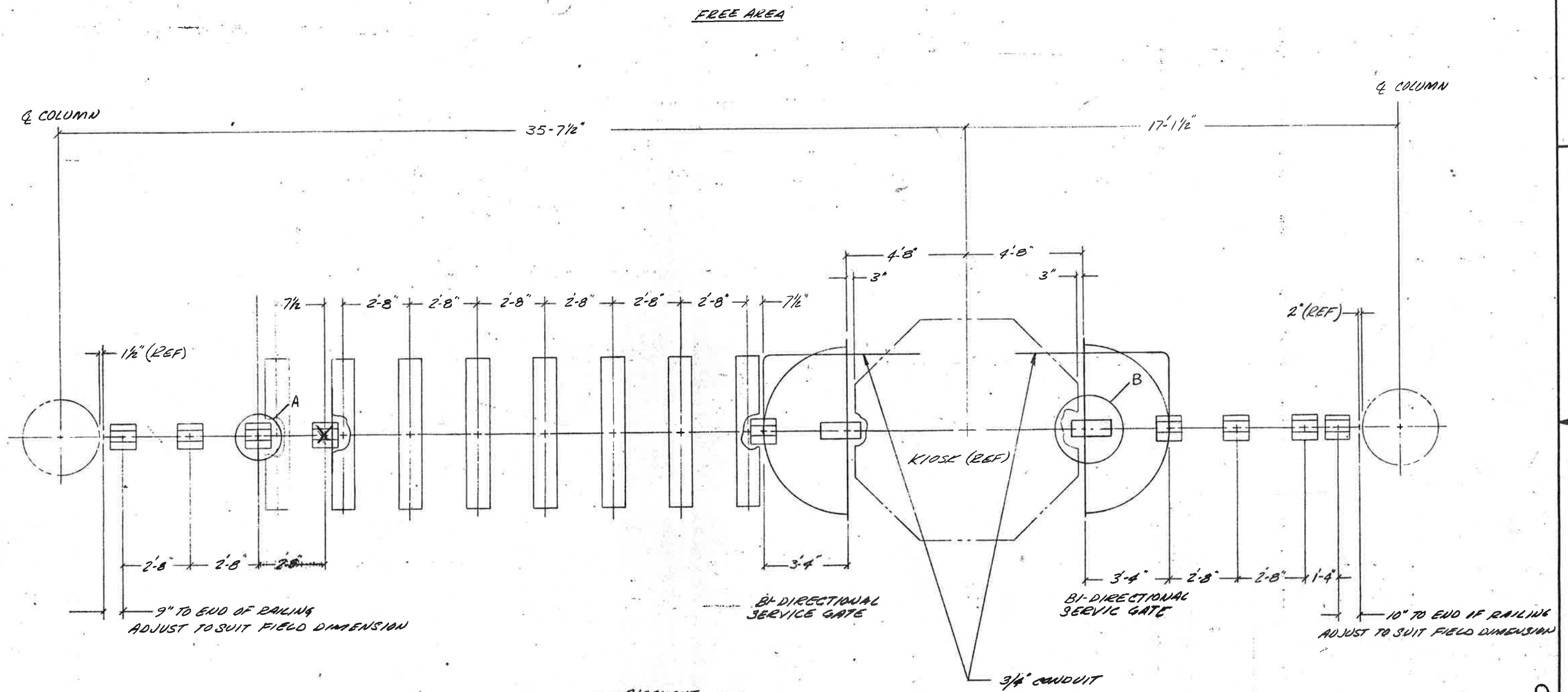
CUBIC WESTERN DATA  
A subsidiary of Cubic Corporation  
3650 KENNEDY WEAVER ROAD • 25TH OFFICE BOX 8078 • SAN DIEGO, CA 92138

CODE IDENT NO. 94987

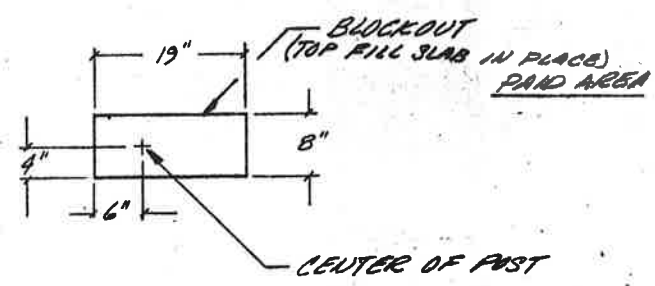
DATE	BY	CHKD	APP'D

DRAWN: LER...  
DESIGN: ...  
ENGR: ...  
CHECKED: ...  
APPROVAL: ...

926-0417



DETAIL A  
9 PLACES  
SCALE 1"=1'-0"



DETAIL B  
2 PLACES  
SCALE 1"=1'-0"

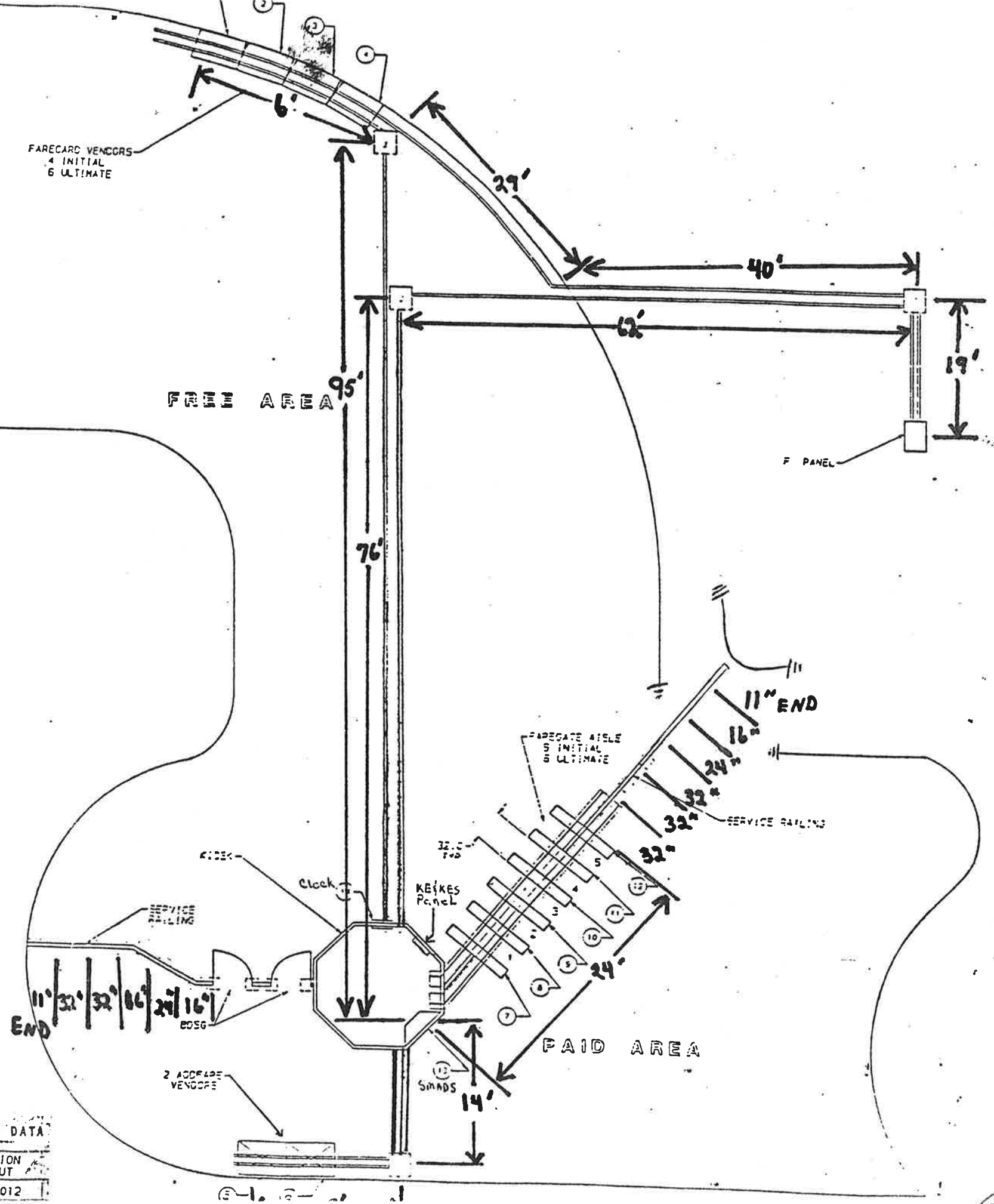
- 2 SOUTH MEZZANINE

D.P. 22007A-144-2-2

SIZE	FSCM NO.	DWG. NO.	REV.	ISSUE
D	94987	926-0353	5D	A
SCALE 1/2"=1'-0"		REF GP. A-261	SHEET 2 OF 2	



ITEM	QTY	NO.	PANEL	TYPE
1 VENDOR	FV1851	F	2	
2 VENDOR	FV1810	F	3	
3 VENDOR	FV1845	F	4	
4 VENDOR	FV1832	F	5	
5 ACCESS	AF2814	F	6	
6 ACCESS	AF2815	F	7	
7 ENTRY GATE	EG3810	F	8	
8 REV. GATE	RG7844	F	9	
9 REV. GATE	RG7843	F	10	
10 REV. GATE	RG7824	F	11	
11 REV. GATE	RG7822	F	12	
12 EXIT GATE	XG4807			
13 SMADS	SM8808	KE	1	
14 CLOCK	98911	KES	8	
Emergency Lights		KE	4	



SEE SEPARATE PL. WHEN ITEM NUMBERS ARE USED THE DESIGNATOR MAY BE USED IN LIEU OF ITEM NUMBER.

NO.	QTY	NO.	NO.
1	1	1	1
2	1	2	2
3	1	3	3
4	1	4	4

UNLESS OTHERWISE SPECIFIED DIMENSIONS ARE IN INCHES

DATE: 12/07/1993

FILE NO. 931-4012

CUBIC WESTERN DATA

MT. VERNON STATION MEZZANINE LAYOUT

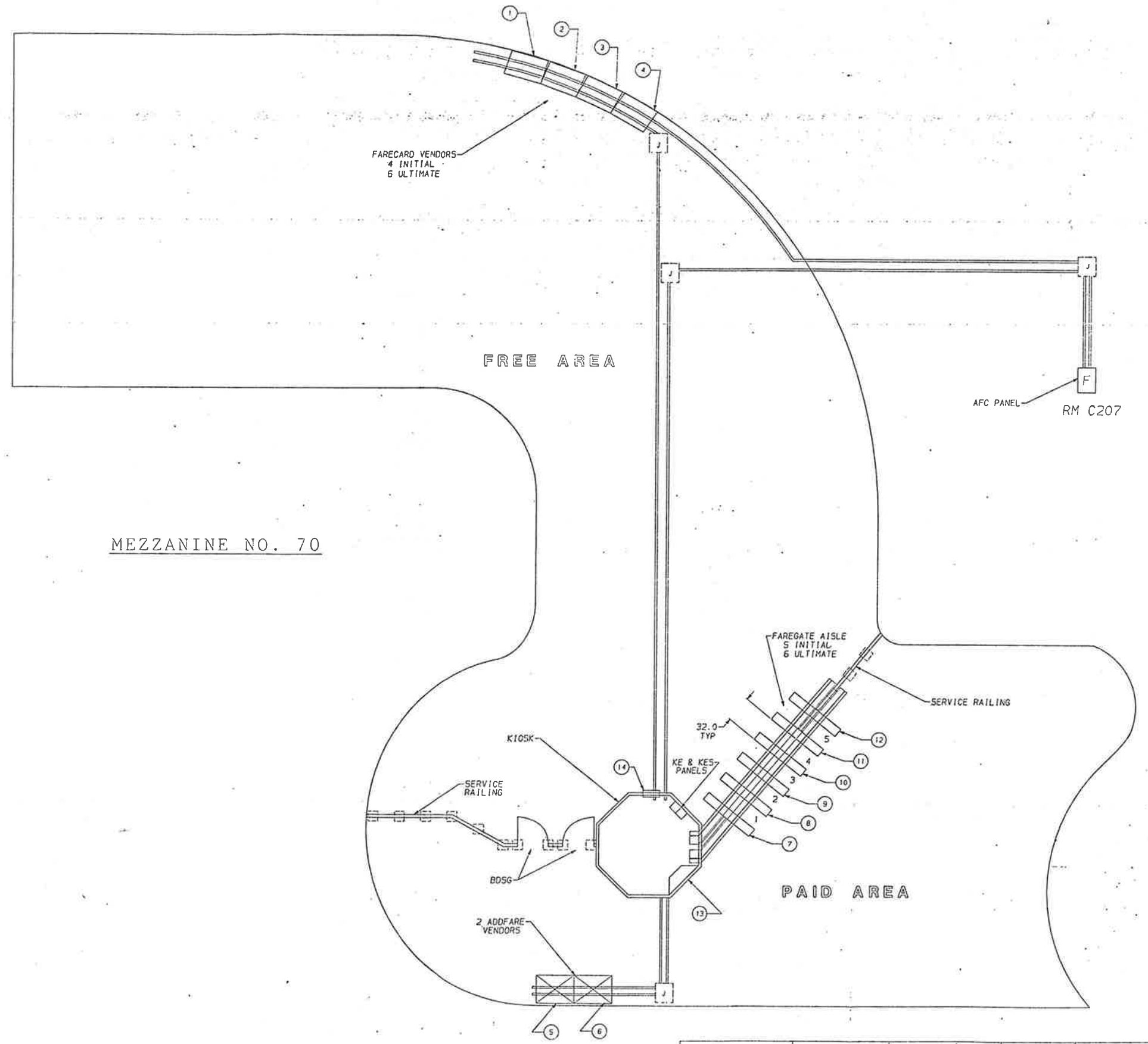
931-4012



ZONE REV	DESCRIPTION	DATE	APPROVED
A	INITIAL RELEASE	01/10/52	R. KULTE
B	DCN 028898 BJC 04/03/52	4/1/52	R. KULTE

**NOTES:**

1. FOR VENDOR AND ADDFARE INSTALLATION SEE 931-4002.
2. FOR SMADS INSTALLATION SEE 931-4001.
3. FOR ENTRY, EXIT AND REVERSIBLE GATE INSTALLATION SEE 931-4003.
4. FOR BI-DIRECTIONAL SERVICE GATE INSTALLATION SEE 931-4005.
5. FOR A TYPICAL MEZZANINE INSTALLATION SEE 931-4000.
6. CIRCUIT BREAKERS WITH COMMON NEUTRAL:  
2, 3 & 4; 6 & 7; 8, 9 & 10; 11 & 12.



ITEM	NAME	S/N	PANEL AFC	KIOSK EMERGENCY BREAKER
1	VENDOR	1851	F	2
2	VENDOR	1810	F	3
3	VENDOR	1845	F	4
4	VENDOR	1832	F	5
5	ADDFARE	2814	F	6
6	ADDFARE	2815	F	7
7	ENTRY GATE	3810	F	8
8	REV. GATE	7844	F	9
9	REV. GATE	7843	F	10
10	REV. GATE	7809	F	11
11	REV. GATE	7807	F	12
12	EXIT GATE	4807	F	N/A
13	SMADS	8808	KE	1
14	CLOCK	98911	KES	8
15	EMERGENCY LT		KE	4

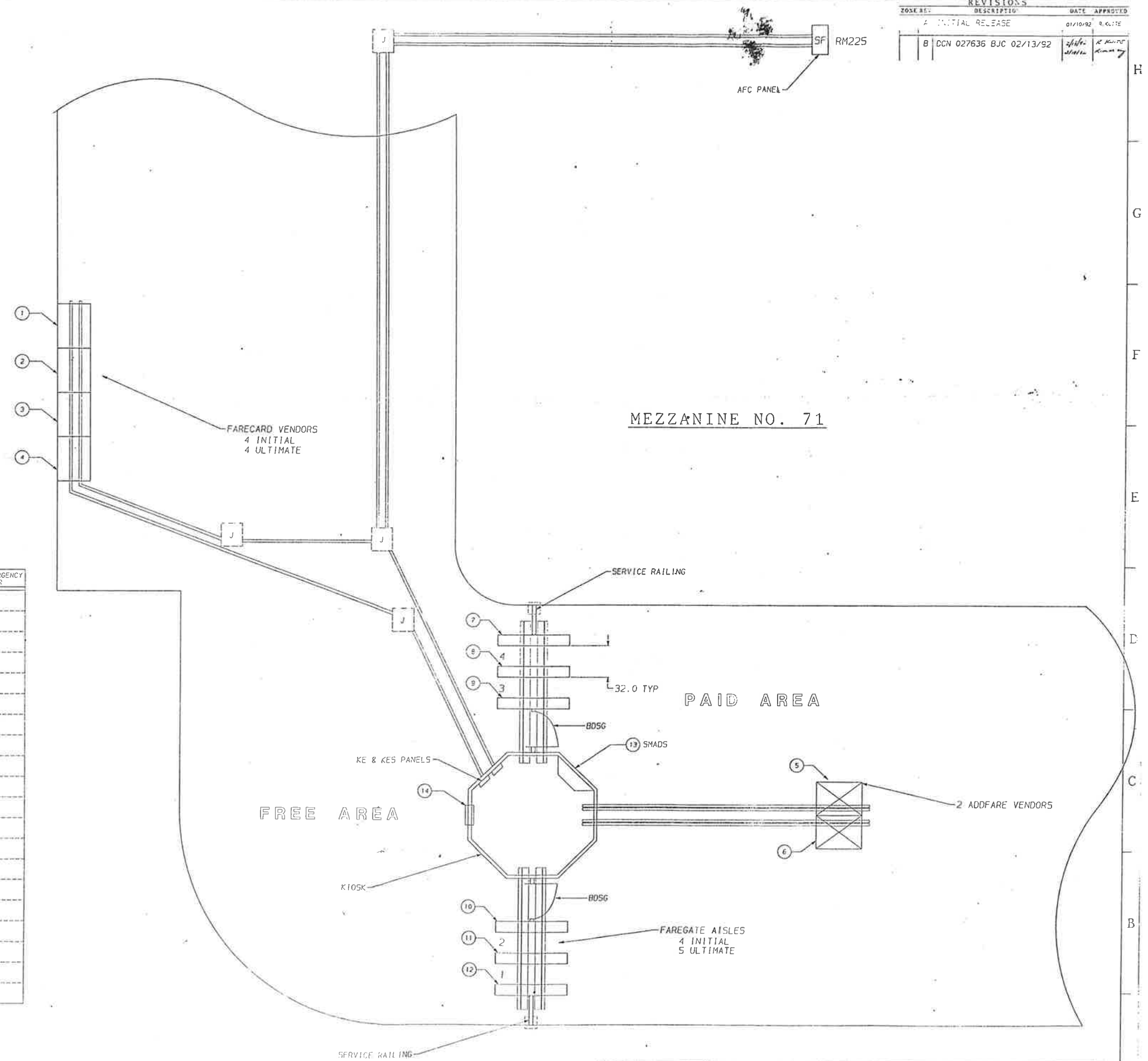
MEZZANINE NO. 70

SEE SEPARATE PL WHEN ITEM NUMBERS ARE USED (REF DESIGNATOR MAY BE USED IN LIEU OF ITEM NUMBERS)	HOLE TOLERANCES ARE: HOLE DIA TOLERANCES .0125 thru .125 +.004 - .001 .126 thru .250 +.006 - .001 .251 thru .500 +.008 - .001 .501 thru .750 +.008 - .001 .751 thru 1.000 +.010 - .001	UNLESS OTHERWISE SPECIFIED DIMENSIONS ARE IN INCHES	DATE: 04/03/52 FILE NO: 931-4012-10 FILE LOCATION: CONSTRUCTION APPROVALS	 <b>CUBIC</b> CONSTRUCTION GROUP WESTERN DATA DIVISION TITLE: MT. VERNON STATION MEZZANINE LAYOUT DRAWN BY: R. KULTE CHECKED BY: R. KULTE DATE: 04/03/52 SHEET NO: 1/45 OF: 1
---	--	---	---	--

REVISIONS		
ZONE REF.	DESCRIPTION	DATE APPROVED
A	INITIAL RELEASE	01/10/92 R. KITE
B	DCN 027636 BJC 02/13/92	Shaw R. KITE

**NOTES:**

- FOR VENDOR AND ADDFARE INSTALLATION SEE 931-4002.
- FOR SMADS INSTALLATION SEE 931-4001.
- FOR ENTRY, EXIT AND REVERSIBLE GATE INSTALLATION SEE 931-4003.
- FOR BI-DIRECTIONAL SERVICE GATE INSTALLATION SEE 931-4005.
- FOR A TYPICAL MEZZANINE INSTALLATION SEE 931-4000.
- CIRCUIT BREAKERS WITH COMMON NEUTRAL:  
7, 9 & 11; 16 & 18; 2 & 4; 6 & 8.

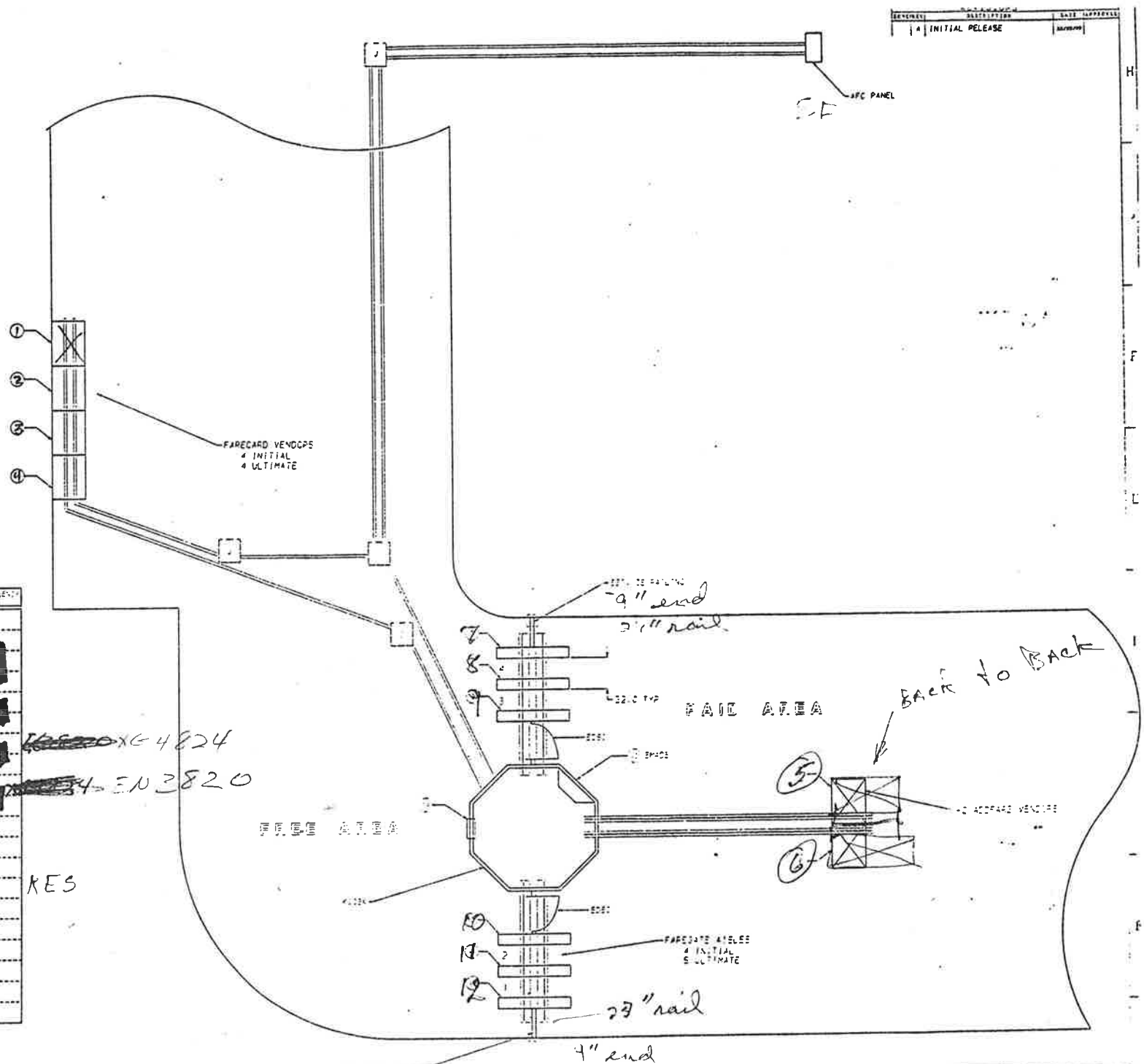


ITEM	NAME	S/N	PANEL AFC	KIOSK EMERGENCY BREAKER
1	VENDOR			
2	VENDOR	1854	SF	11
3	VENDOR	1853	SF	8
4	VENDOR	1853	SF	7
5	ADDFARE	2824	SF	16
6	ADDFARE	2822	SF	18
7	EXIT GATE	4824	SF	N/A
8	REV. GATE	7891	SF	12
9	ENTRY GATE	3820	SF	10
10	EXIT GATE	4822	SF	N/A
11	REV. GATE	7871	SF	6
12	ENTRY GATE	3818	SF	8
13	SMADS	8813	KE	1
14	SMADS CLOCK	85715	KES	7
15	EMERGENCY LT		KES	4

<p>FOR SHAW STATION SOUTH MEZZANINE NO. 71 SEE 931-4000 FOR DETAILS SEE 931-4001 FOR DETAILS SEE 931-4002 FOR DETAILS SEE 931-4003 FOR DETAILS SEE 931-4005 FOR DETAILS</p>	<p>FOR SHAW STATION SOUTH MEZZANINE NO. 71 SEE 931-4000 FOR DETAILS SEE 931-4001 FOR DETAILS SEE 931-4002 FOR DETAILS SEE 931-4003 FOR DETAILS SEE 931-4005 FOR DETAILS</p>	<p>FOR SHAW STATION SOUTH MEZZANINE NO. 71 SEE 931-4000 FOR DETAILS SEE 931-4001 FOR DETAILS SEE 931-4002 FOR DETAILS SEE 931-4003 FOR DETAILS SEE 931-4005 FOR DETAILS</p>	<p>FOR SHAW STATION SOUTH MEZZANINE NO. 71 SEE 931-4000 FOR DETAILS SEE 931-4001 FOR DETAILS SEE 931-4002 FOR DETAILS SEE 931-4003 FOR DETAILS SEE 931-4005 FOR DETAILS</p>	<p>FOR SHAW STATION SOUTH MEZZANINE NO. 71 SEE 931-4000 FOR DETAILS SEE 931-4001 FOR DETAILS SEE 931-4002 FOR DETAILS SEE 931-4003 FOR DETAILS SEE 931-4005 FOR DETAILS</p>
---	---	---	---	---

**CUBIC**  
AUTOMATIC REVENUE  
COLLECTION GROUP  
WESTERN DATA DIVISION  
SHAW STATION SOUTH  
MEZZANINE LAYOUT  
931-4014

NO.	TYPE	NO.	DATE	BY	REVISION
1	VENUE	DRL-PCO			
2	VENUE	W1854	SF	11	
3	VENUE	VW1883	SF	9	
4	VENUE	VW1833	SF	7	
5	ADDFARE	AF2825	SF	16	
6	ADDFARE	AE2824	SF	18	
7	ENTR DATE	<del>XXXXXXXX</del>	C		
8	ENTR DATE	IG7881	SF	2	
9	ENTR DATE	<del>XXXXXXXX</del>	C	4	
10	ENTR DATE	RG4822			
11	ENTR DATE	KS7871		6	
12	ENTR DATE	EG3819	SF	8	
13	ENTR DATE	SN8813	RES	1	
14	ENTR DATE	<del>XXXXXXXX</del>	RES	7	
15	ENTR DATE	BRCSLT	RES	4	



~~XXXXXXXX~~ 4824  
~~XXXXXXXX~~ EN 3820

RES

95715

NO. SHOWN	DATE	BY	REVISION

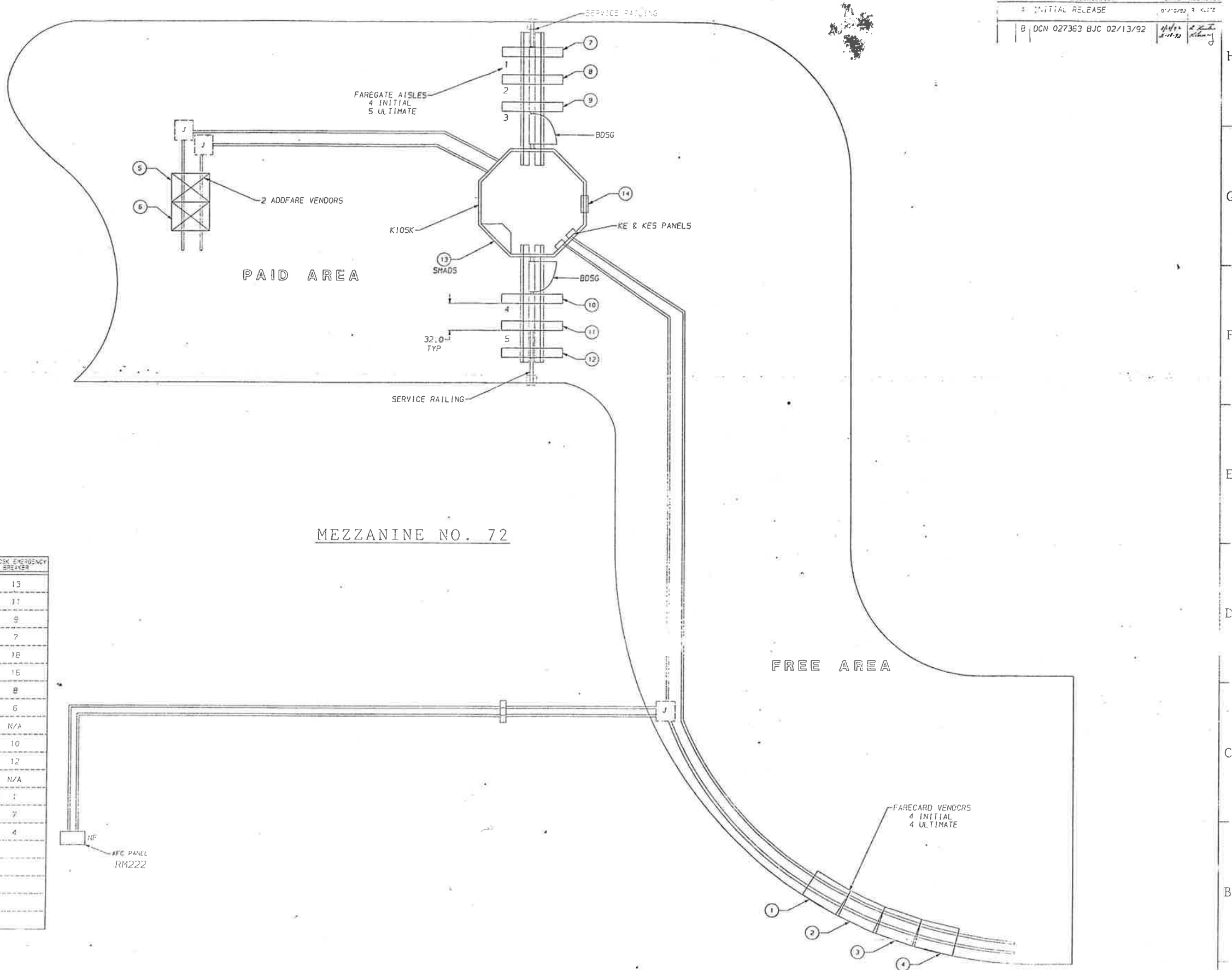
CUBH - WESTERN DATA  
 SHAW STATION SOUTH  
 MEZZANINE LAYOUT  
 931-4014

71

NOTES:

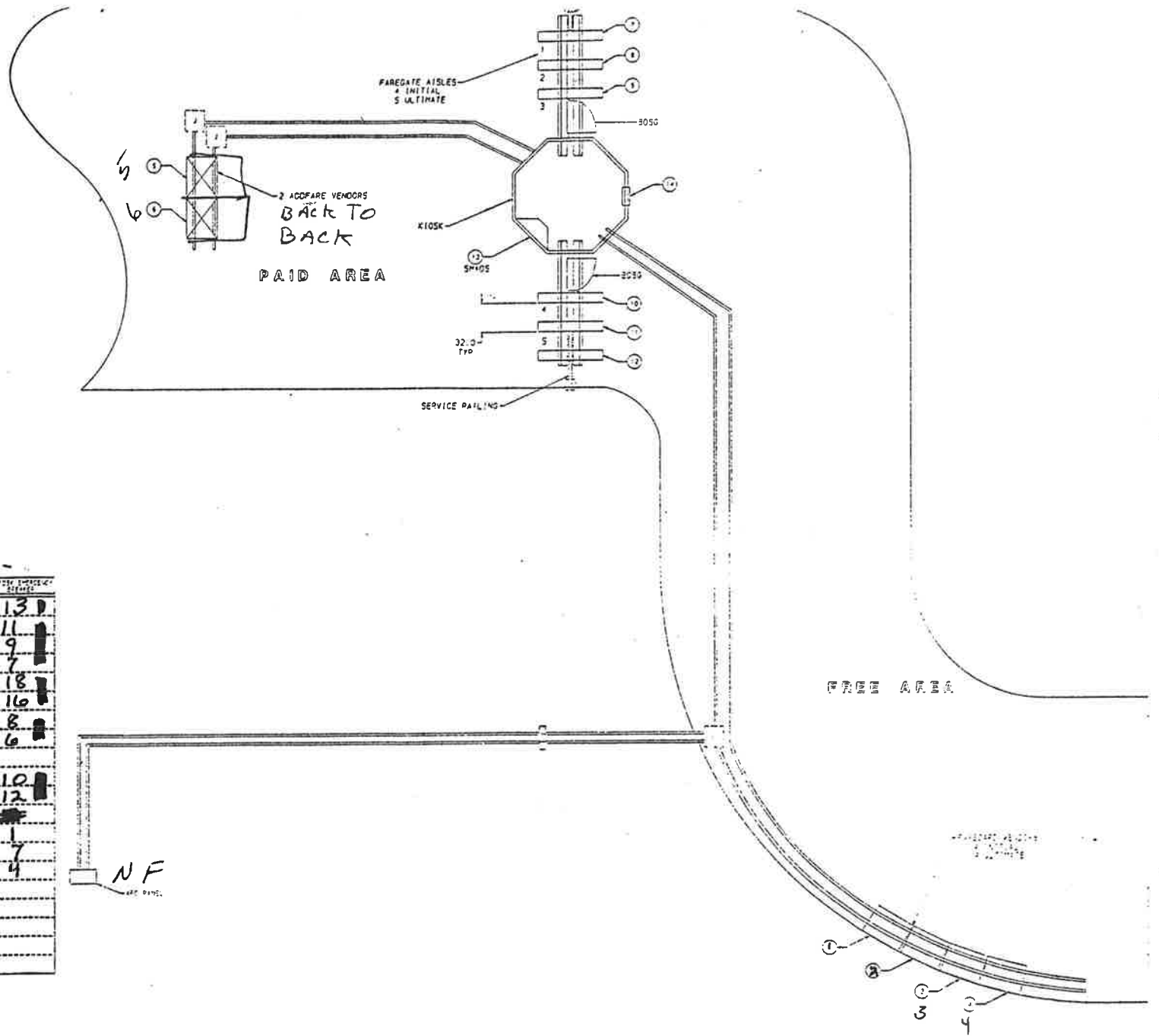
1. FOR VENDOR AND ADDFARE INSTALLATION SEE 931-4002.
2. FOR SHADS INSTALLATION SEE 931-4001.
3. FOR ENTRY, EXIT AND REVERSIBLE GATE INSTALLATION SEE 931-4003.
4. FOR BI-DIRECTIONAL SERVICE GATE INSTALLATION SEE 931-4005.
5. FOR A TYPICAL MEZZANINE INSTALLATION SEE 931-4000.
6. CIRCUIT BREAKERS WITH COMMON NEUTRAL, 7, 9 & 11, 16 & 18, 6 & 8, 10 & 12.

REVISIONS		
ZONE NO.	DESCRIPTION	DATE APPROVED
A	INITIAL RELEASE	01/12/92 R. KUIE
B	DCN 027363 BJC 02/13/92	02/13/92 R. KUIE



NAME	S/N	PANEL AF2	KIOSK EMERGENCY BREAKER
1 VENDOR	VN1828	NF	13
2 VENDOR	VN1817	NF	11
3 VENDOR	VN1816	NF	9
4 VENDOR	VN1808	NF	7
5 ADDFARE	AF2821	NF	18
6 ADDFARE	AF2820	NF	16
7 ENTRY GATE	EG3819	NF	8
8 REV. GATE	RG7870	NF	6
9 EXIT GATE	XG4821	NF	N/A
10 ENTRY GATE	EG3813	NF	10
11 REV. GATE	RG7869	NF	12
12 EXIT GATE	XG4820	NF	N/A
13 SHADS	SM4841	KE	1
14 SHADS CLOCK	954114	KES	7
EMERGENCY LT		YES	4

**CUBIC**  
 CONSULTING ENGINEERS  
 931 4011  
 SHAW STATION NORTH  
 MEZZANINE LAYOUT  
 931 4011



ITEM	NAME	SYM	PLANT. USE	1:2000 SYMBOL REFERENCE
1	VENDOR	VN 1828	NF	13 D
2	VENDOR	VN 1817		11
3	VENDOR	VN 1816		9
4	VENDOR	VN 1808		7
5	ADDFARE	AF 2821		18
6	ADDFARE	AF 2820		16
7	ENTRY GATE	EG 3819		8
8	EXIT GATE	EG 7870		6
9	EXIT GATE	EG 4821		
10	ENTRY GATE	EG 3813		10
11	REL. GATE	RG 7869		12
12	EXIT GATE	EG 4820 N F		
13	SHADE	8812	KES	1
14	SHADE CLOCK	95719	KES	7
	EMER LT		KES	4

N F  
PLANT. USE

THE DATA CONTAINED HEREIN IS UNCLASSIFIED EXCEPT WHERE SHOWN OTHERWISE. DATE 04/11/01 BY 60320 UCBAW/STP/STP

SHAW NORTH

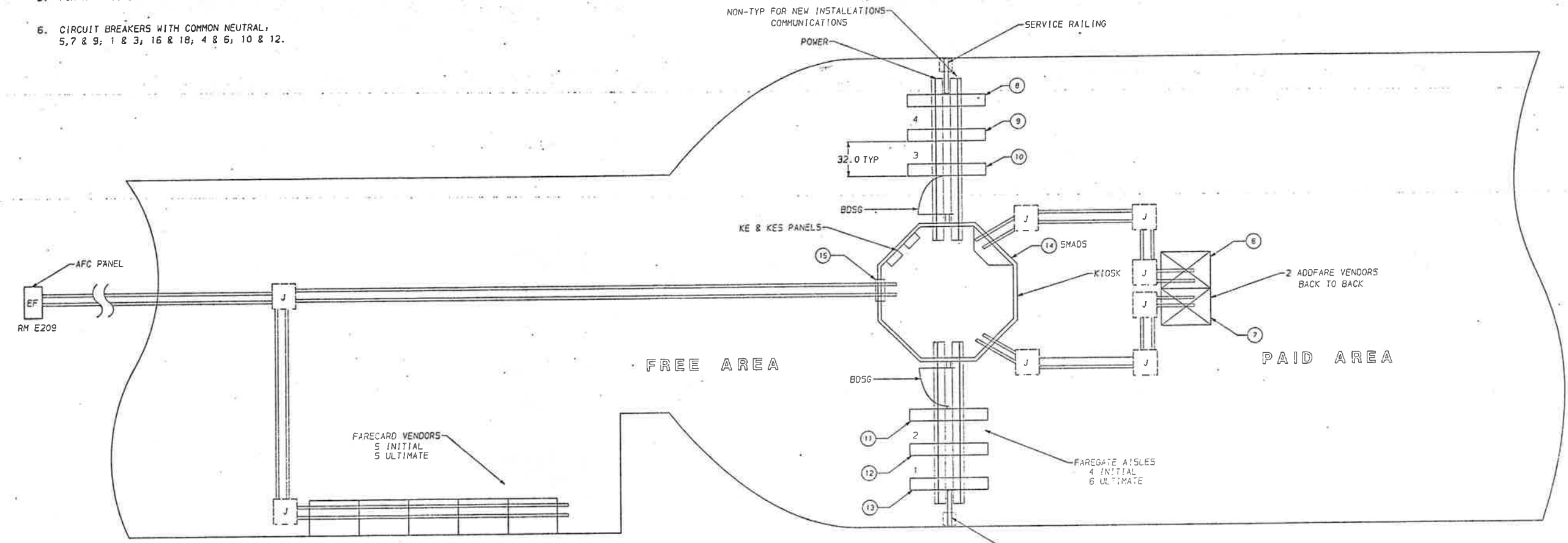
CUBIC WESTERN DATA

72

REVISIONS		DATE	APPROVED
A	INITIAL RELEASE	01/19/92	R. KUIE
B	DCN 028900 BJC 03/20/92		

NOTES:

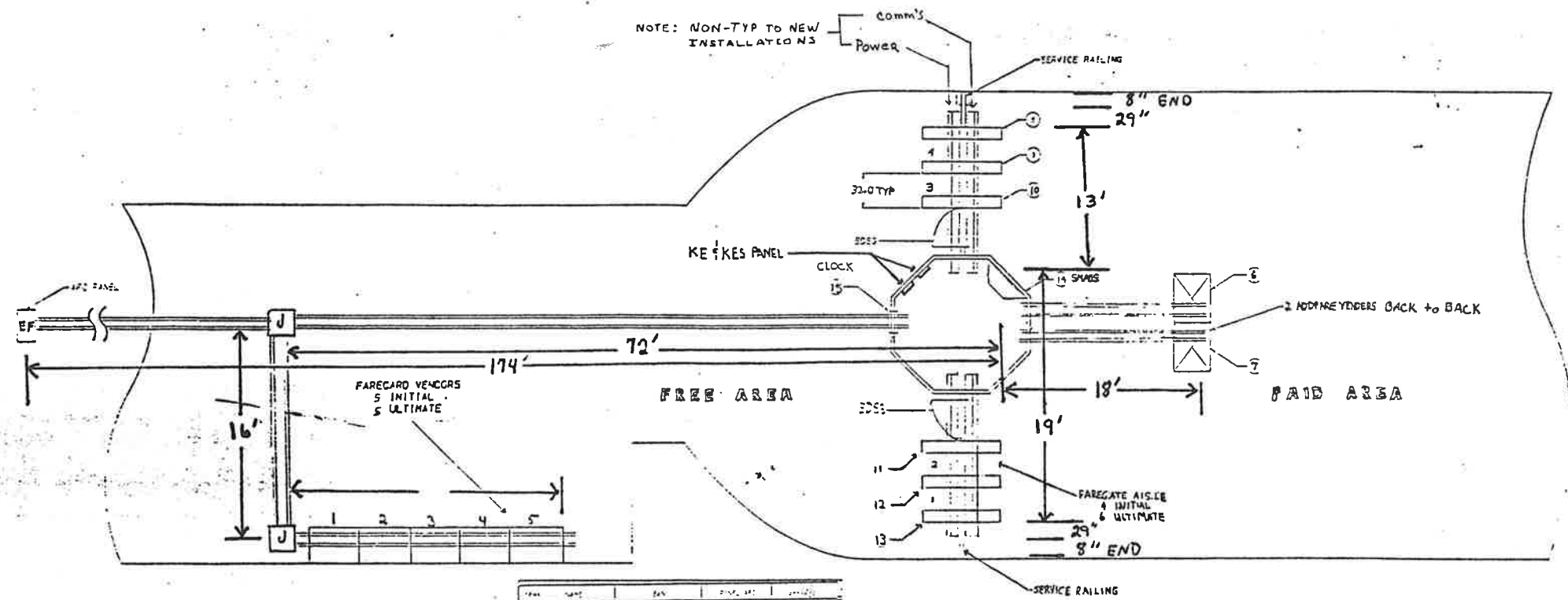
1. FOR VENDOR AND ADDFARE INSTALLATION SEE 931-4002.
2. FOR SMADS INSTALLATION SEE 931-4001.
3. FOR ENTRY, EXIT AND REVERSIBLE GATE INSTALLATION SEE 931-4003.
4. FOR BI-DIRECTIONAL SERVICE GATE INSTALLATION SEE 931-4005.
5. FOR A TYPICAL MEZZANINE INSTALLATION SEE 931-4000.
6. CIRCUIT BREAKERS WITH COMMON NEUTRAL:  
5, 7 & 9; 1 & 3; 16 & 18; 4 & 6; 10 & 12.



ITEM	NAME	S/N	PANEL AFC	1/3E BREAKER
1	VENDOR	1862	EF	9
2	VENDOR	1865	EF	7
3	VENDOR	1867	EF	5
4	VENDOR	1872	EF	3
5	VENDOR	1863	EF	1
6	ADDFARE	2832	EF	18
7	ADDFARE	2831	EF	16
8	EXIT GATE	4808	EF	N/A
9	REV. GATE	7808	EF	6
10	ENTRY GATE	3811	EF	4
11	EXIT GATE	4816	EF	N/A
12	REV. GATE	7875	EF	12
13	ENTRY GATE	3823	EF	10
14	SMADS	8811	KE	1
15	SMADS CLOCK	95718	KES	8
16	EMERGENCY LT		KE	4

MEZZANINE NO. 73

SEE SEPARATE PL WHEN ITEM NUMBERS ARE USED (REF DESIGNATOR MAY BE USED IN LIEU OF ITEM NUMBERS)	UNLESS OTHERWISE SPECIFIED	UNLESS OTHERWISE SPECIFIED	DRAWN: R. KUIE DATE: 01/19/92	 AUTOMATIC REVENUE COLLECTION GROUP WESTERN GATE DIVISION
	HOLE DIA TOLERANCES ARE: .015 THRU .125 +.004 - .001 .126 THRU .250 +.005 - .001 .251 THRU .500 +.006 - .001 .501 THRU .950 +.008 - .001	UNLESS OTHERWISE SPECIFIED DIMENSIONS ARE IN INCHES TOLERANCES: LINEAR .001, .010, .030 ANGULAR .010		

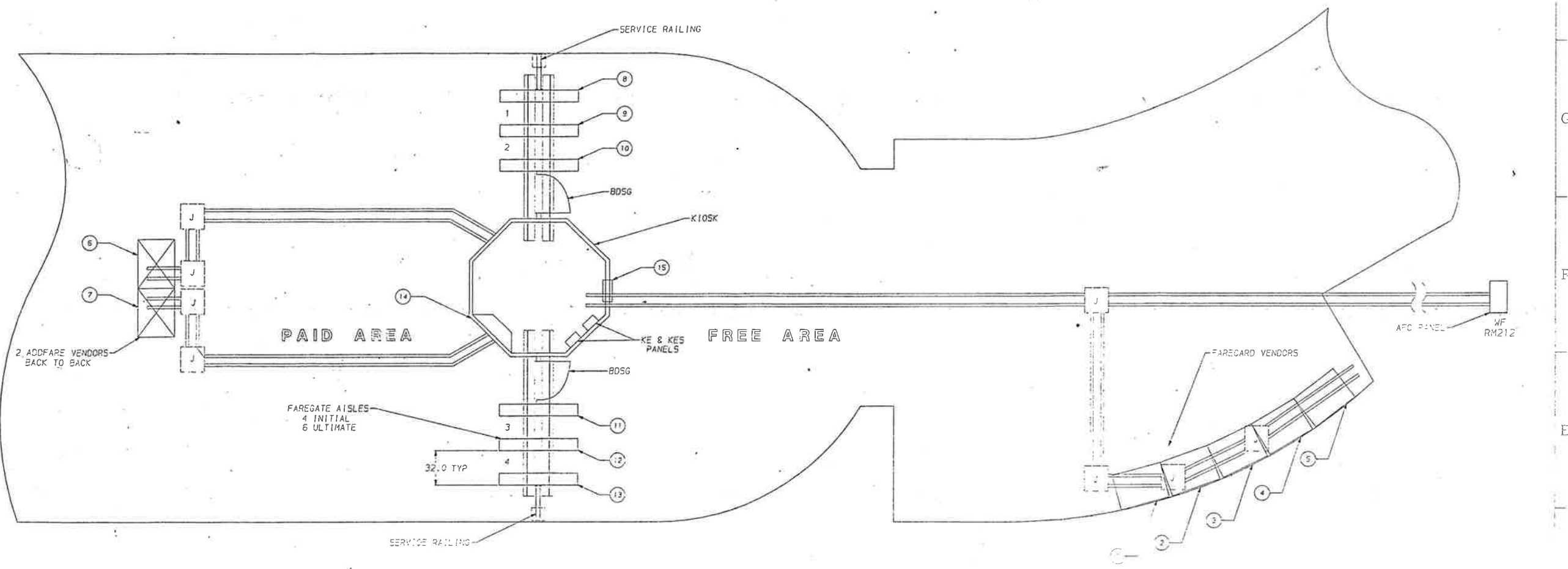


TYPE	NAME	NO.	PLAC. NO.	QTY.
1	SECTOR	VN1862	EF	9
2	SECTOR	VN1872	"	7
3	SECTOR	VN1867	"	5
4	SECTOR	VN1865	"	3
5	SECTOR	VN1863	"	1
6	SECTOR	AF2832	"	18
7	SECTOR	AF2831	"	16
8	SECTOR	XG4808	"	
9	SECTOR	RG7880	"	6
10	SECTOR	EG3811	"	4
11	SECTOR	XG4816	"	
12	SECTOR	RG7875	"	12
13	SECTOR	EG3822	"	10
14	SECTOR	SM2811	KE	1
15	SECTOR	95718	KES	8
16	SECTOR		KE	4

*info only*

UNION PACIFIC  
U. ST. EAST STATION  
73

ZONE REV	REVISIONS	DATE APPROVED
A	INITIAL RELEASE	
B	CON 028689 BUD 03/20/82	



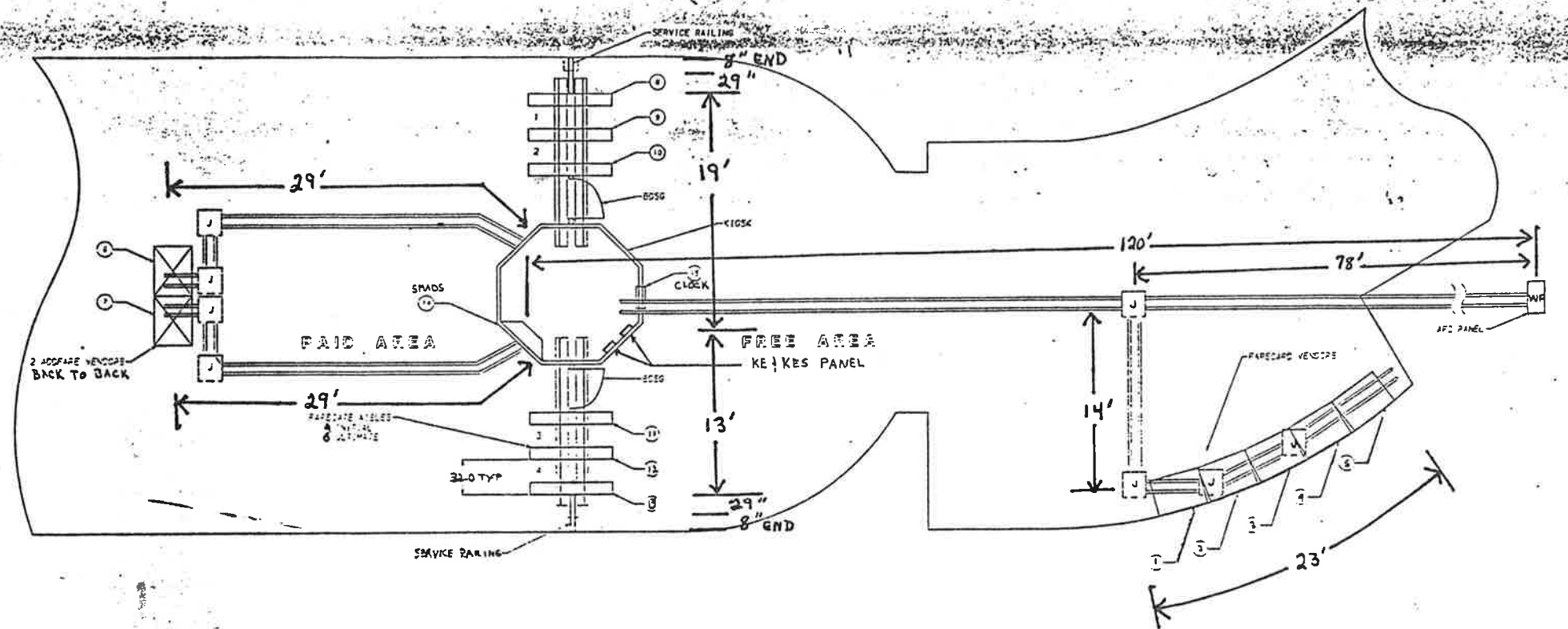
MEZZANINE NO. 74

NOTES:

- FOR VENDOR AND ADDFARE INSTALLATION SEE 931-4002.
- FOR SHADS INSTALLATION SEE 931-4001.
- FOR ENTRY, EXIT AND REVERSIBLE GATE INSTALLATION SEE 931-4003.
- FOR BI-DIRECTIONAL SERVICE GATE INSTALLATION SEE 931-4005.
- FOR A TYPICAL MEZZANINE INSTALLATION SEE 931-4000.
- CIRCUIT BREAKERS WITH COMMON NEUTRAL:  
7 & 9; 1, 3 & 5; 16 & 18; 10 & 12; 4 & 6.

ITEM	NAME	S/N	PANEL AFC	I/35 BU/AKE-2
1	VENDOR	1857	WF	9
2	VENDOR	1858	WF	7
3	VENDOR	1840	WF	5
4	VENDOR	1819	WF	3
5	VENDOR	1814	WF	1
6	ADDFARE	2330	WF	18
7	ADDFARE	2225	WF	18
8	ENTRY GATE	3828	WF	12
9	REV. GATE	7653	WF	10
10	EXIT GATE	4814	WF	N/A
11	ENTRY GATE	3805	WF	4
12	REV. GATE	7841	WF	6
13	EXIT GATE	4810	WF	
14	SHADS	8814	KE	1
15	SHADS CLOCK	48812	KES	8
16	EMERGENCY LT		KL	4

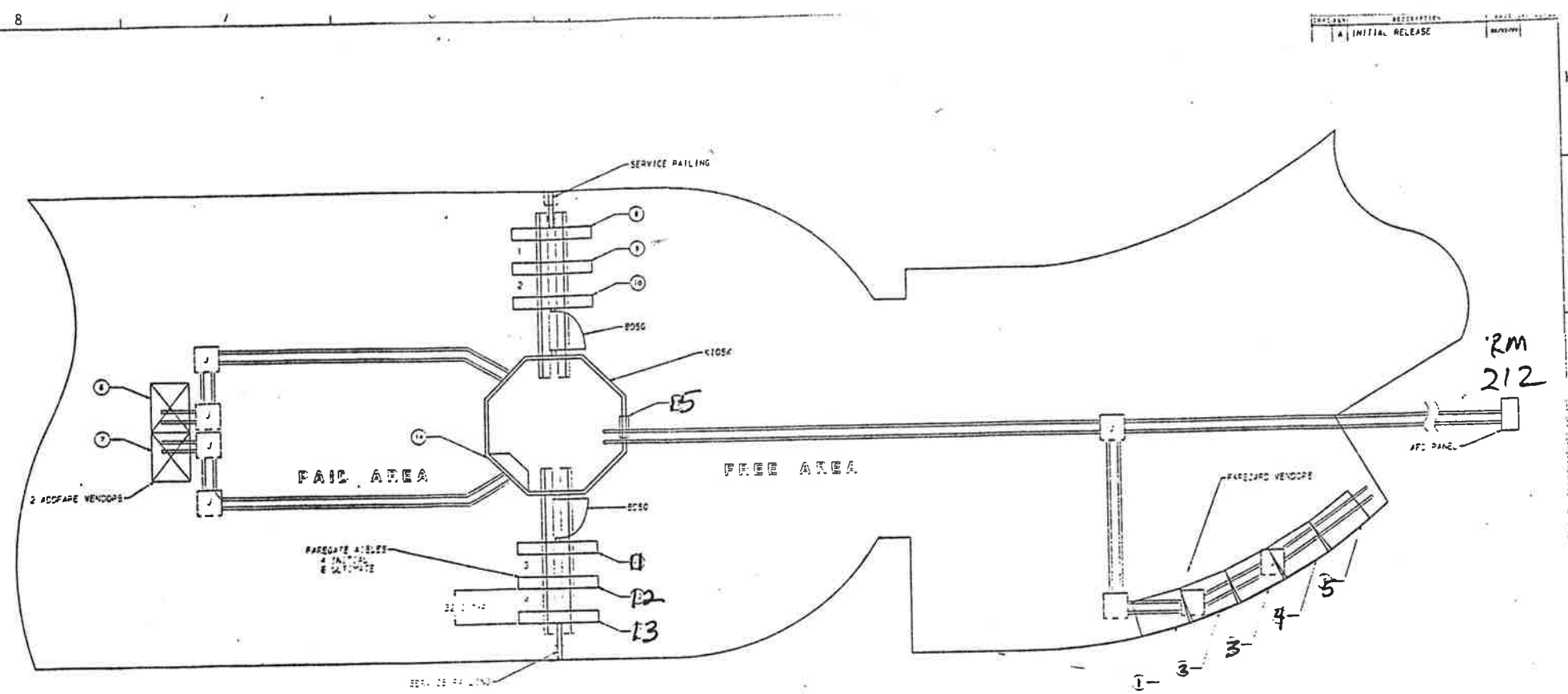




NO	NAME	NO	PLAS. MFC	AMOUNT
1	VENCOF	VN1857	WF	9
2	VENCOF	VN1851	"	7
3	VENCOF	VN1840	"	5
4	VENCOF	YN1819	"	3
5	VENCOF	YN1814	"	1
6	VENCOF	AF2820	"	16
7	VENCOF	AF2805	"	12
8	VENCOF	EG3809	"	12
9	VENCOF	RG3853	"	10
10	VENCOF	XG4814	"	4
11	VENCOF	EG3806	"	4
12	VENCOF	RG3841	"	6
13	VENCOF	XG4810	"	4
14	VENCOF	SM3814	KE	1
15	VENCOF	38912	KES	9
16	EMERG. LTS.		KE	4

*info only*

U.S. WEST STATISTICAL SERVICE	COMMUNICATIONS DATA
U.S. WEST STATISTICAL SERVICE	COMMUNICATIONS DATA
U.S. WEST STATISTICAL SERVICE	COMMUNICATIONS DATA



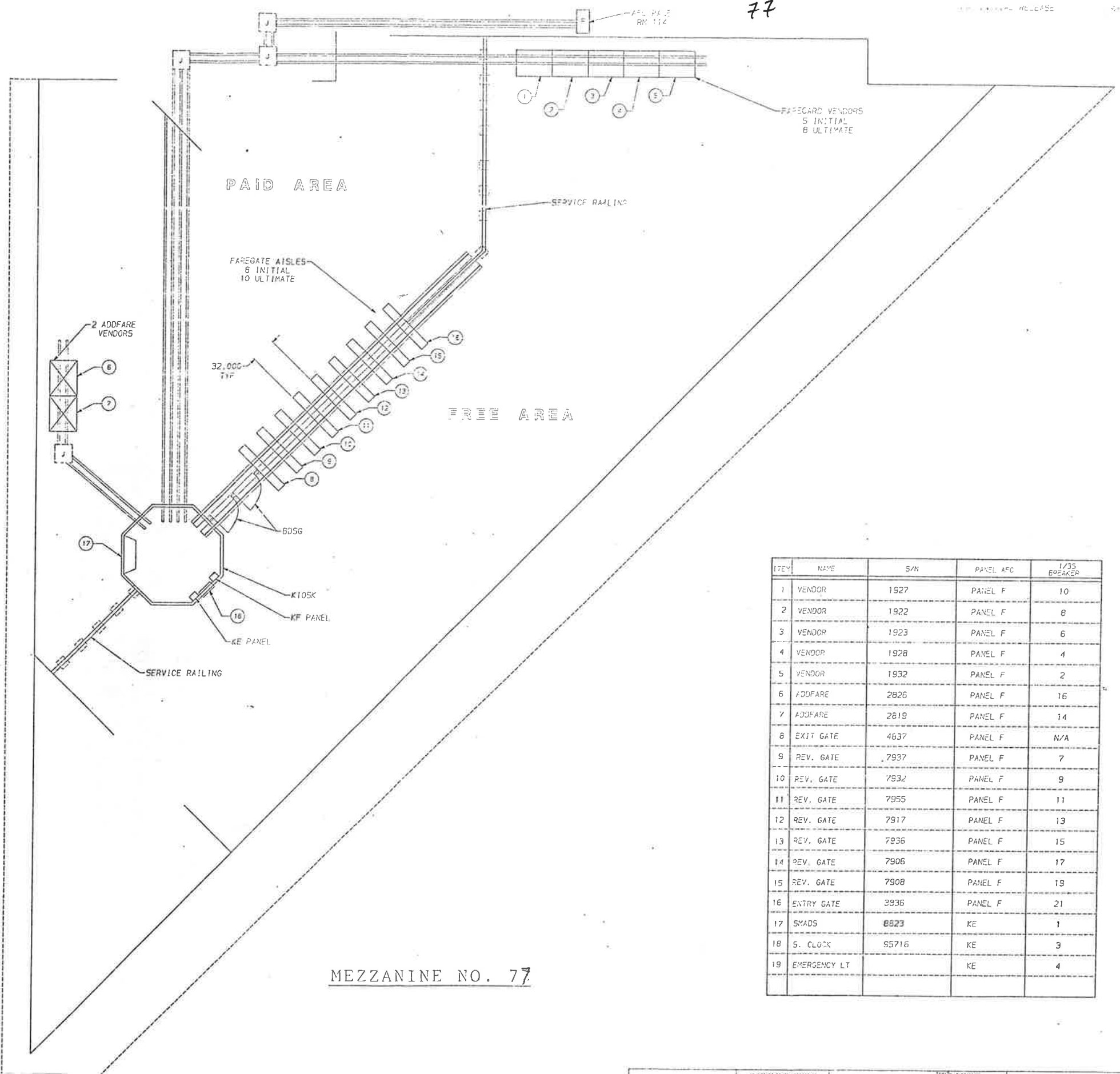
RM 212

NO.	NAME	SPN	APPL. NO.	NO. OF
1	WV 1857	WF		9
2	WV 1851			7
3	WV 1840			5
4	WV 1819			3
5	WV 1814			1
6	AF 2805			10
7	AF 2830			18
8	EG 3809			12
9	RG 7853			10
10	KG 4814			
11	EG 3806			4
12	RG 7841			6
13	KG 4810	WF		7
14	SM 8814	KE		8
15	EMER	KE		4

CUCIC WESTERN DATA  
 U. S. WEST STATION  
 MEZZANINE LAYOUT  
 931-4018

NOTES:

1. FOR VENDOR AND ADDFARE INSTALLATION SEE 931-4002.
2. FOR SMADS INSTALLATION SEE 931-4001.
3. FOR ENTRY, EXIT AND REVERSIBLE GATE INSTALLATION SEE 931-4003.
4. FOR BI-DIRECTIONAL SERVICE GATE INSTALLATION SEE 931-4005.
5. FOR A TYPICAL MEZZANINE INSTALLATION SEE 931-4000.
6. CIRCUIT BREAKERS WITH COMMON NEUTRAL, 2, 4 & 6; 8 & 10; 7, 9 & 11; 13, 15 & 17; 19 & 21.



MEZZANINE NO. 77

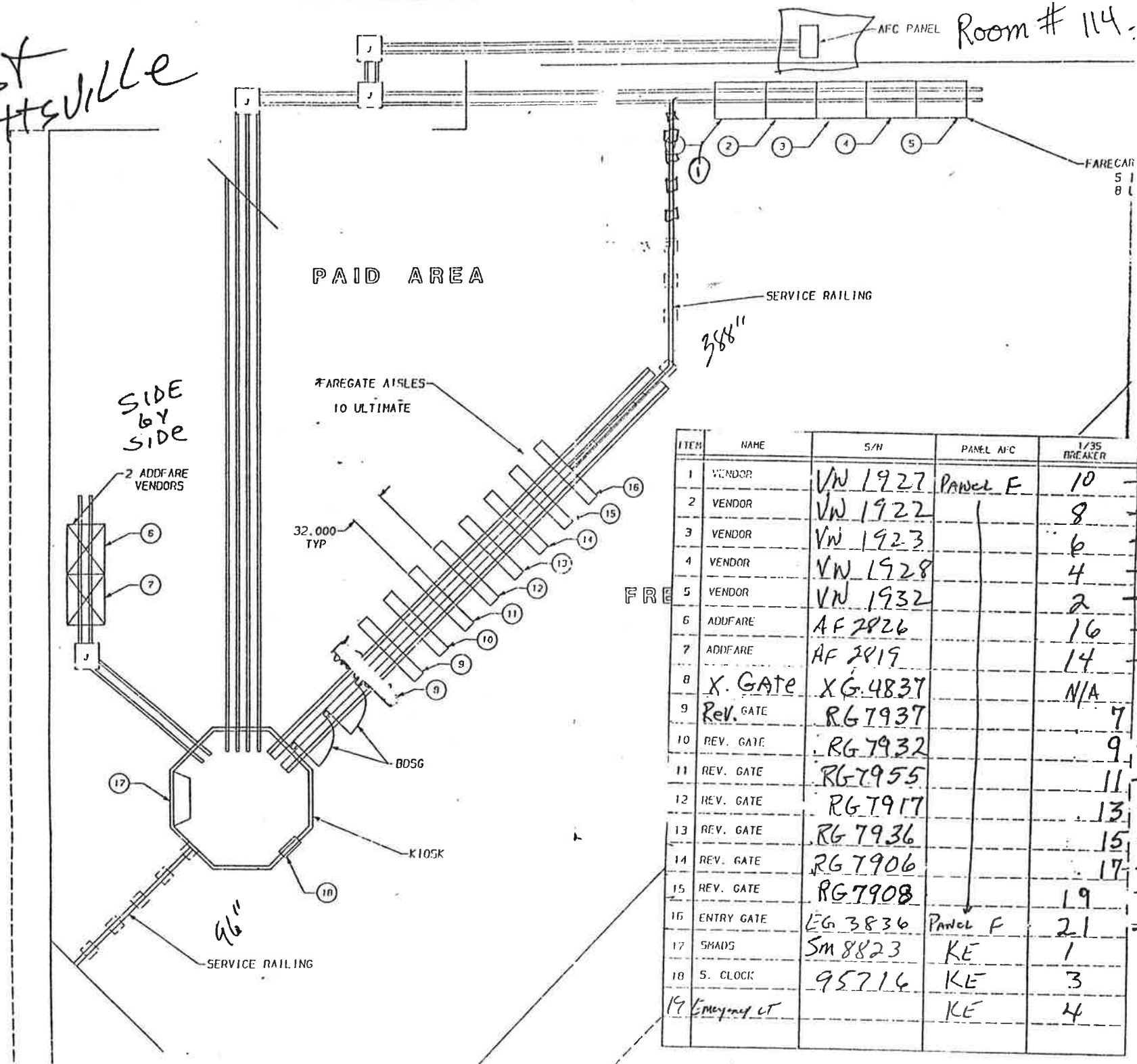
ITEM	NAME	S/N	PANEL AFC	1/35 BREAKER
1	VENDOR	1527	PANEL F	10
2	VENDOR	1922	PANEL F	8
3	VENDOR	1923	PANEL F	6
4	VENDOR	1928	PANEL F	4
5	VENDOR	1932	PANEL F	2
6	ADDFARE	2826	PANEL F	16
7	ADDFARE	2819	PANEL F	14
8	EXIT GATE	4637	PANEL F	N/A
9	REV. GATE	7937	PANEL F	7
10	REV. GATE	7932	PANEL F	9
11	REV. GATE	7955	PANEL F	11
12	REV. GATE	7917	PANEL F	13
13	REV. GATE	7936	PANEL F	15
14	REV. GATE	7906	PANEL F	17
15	REV. GATE	7908	PANEL F	19
16	ENTRY GATE	3936	PANEL F	21
17	SMADS	8823	KE	1
18	S. CLOCK	95716	KE	3
19	EMERGENCY LT		KE	4

NOTICE OF PROPRIETARY RIGHTS IN DATA  
 THE DATA CONTAINED HEREIN IS PROPRIETARY TO CUBIC WESTERN DATA CORP.  
 THIS DATA SHALL NOT BE DUPLICATED, TRANSMITTED, MADE AVAILABLE, OR USED  
 BY ANY THIRD PARTY FOR ANY PURPOSE EXCEPT AS SPECIFICALLY AUTHORIZED IN  
 WRITING BY CWD.

SEE SEPARATE PL WHEN ITEM NUMBERS ARE USED REF DESIGNATOR MAY BE USED IN LIEU OF ITEM NUMBER	UNLESS OTHERWISE SPECIFIED DIMENSIONS ARE IN INCHES	CUBIC WESTERN DATA A member of the Data Corporation family of companies
W. HYATTSVILLE STATION MEZZANINE LAYOUT	931-4023	DATE: 1/4/75
DO NOT SCALE DIMENSIONS	SCALE: 1/8" = 1'-0"	REV: 1 OF 1

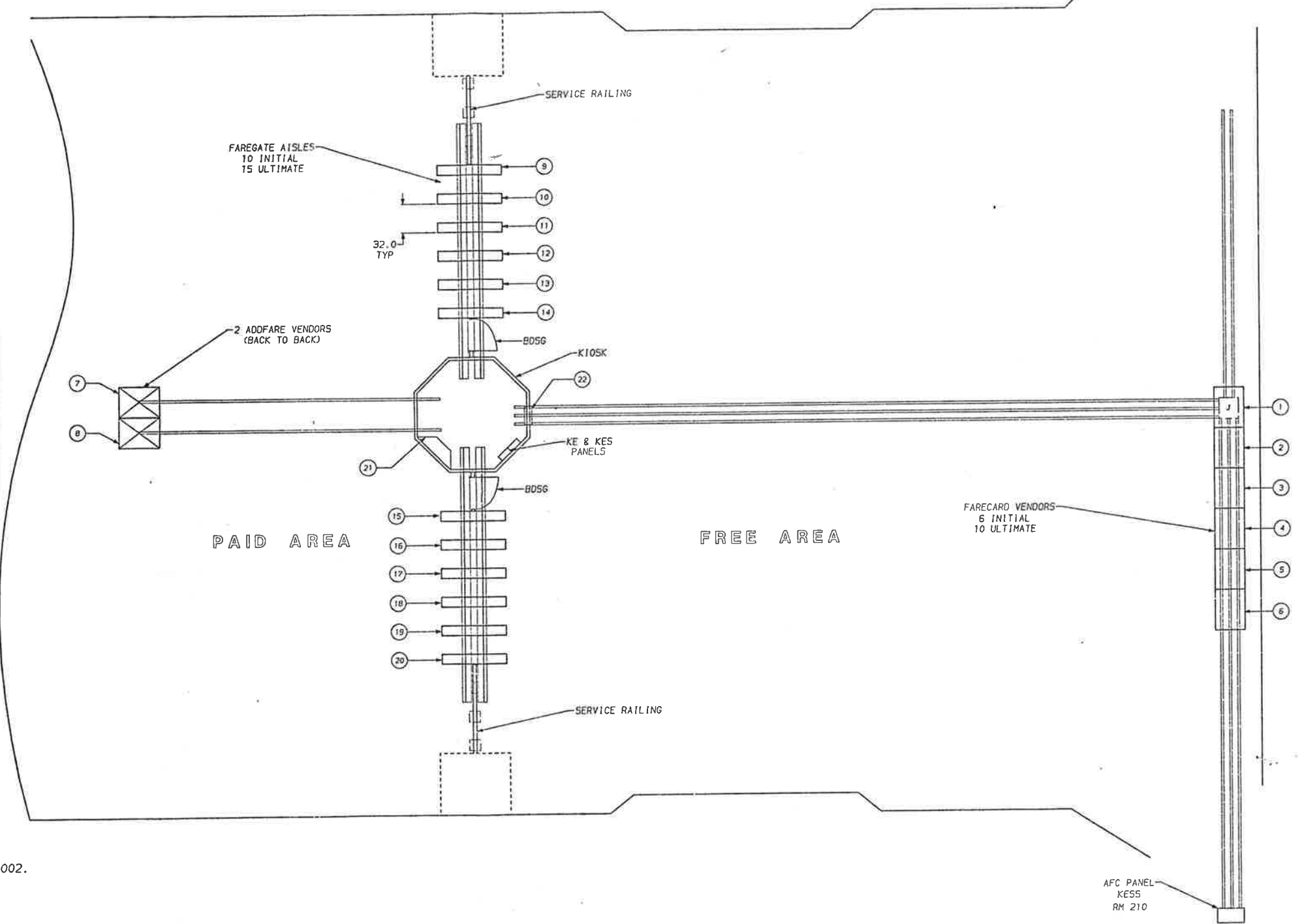
West  
Hyattsville

AFC PANEL Room # 114



ITEM	NAME	S/N	PANEL AFC	1/35 BREAKER	
1	VENDOR	VN 1927	PANEL E	10	N
2	VENDOR	VN 1922		8	N
3	VENDOR	VN 1923		6	N
4	VENDOR	VN 1928		4	N
5	VENDOR	VN 1932		2	N
6	ADDFARE	AF 2826		16	N
7	ADDFARE	AF 2819		14	N
8	X. GATE	XG 4837		N/A	
9	REV. GATE	RG 7937		7	N 7
10	REV. GATE	RG 7932		9	N 9
11	REV. GATE	RG 7955		11	N 11
12	REV. GATE	RG 7917		13	N 13
13	REV. GATE	RG 7936		15	N 15
14	REV. GATE	RG 7906		17	N 17
15	REV. GATE	RG 7908		19	N 19
16	ENTRY GATE	EG 3836	PANEL F	21	N 21
17	SMADS	SM 8823	KE	1	
18	S. CLOCK	95714	KE	3	
19	Emergency CT		KE	4	

ITEM	NAME	S/N	PANEL AFC	1/3S BREAKER
1	VENDOR	1940	KESS	7
2	VENDOR	1933	KESS	9
3	VENDOR	1941	KESS	11
4	VENDOR	1935	KESS	13
5	VENDOR	1939	KESS	15
6	VENDOR	1942	KESS	17
7	ADDFARE	2827	KESS	21
8	ADDFARE	2838	KESS	19
9	ENTRY GATE	FUTURE	KESS	N/A
10	REV. GATE	7934	KESS	2
11	REV. GATE	7909	KESS	4
12	REV. GATE	7930	KESS	6
13	REV. GATE	7938	KESS	8
14	EXIT GATE	4835	KESS	N/A
15	ENTRY GATE	3837	KESS	10
16	REV. GATE	7931	KESS	12
17	REV. GATE	7915	KESS	14
18	REV. GATE	7920	KESS	16
19	REV. GATE	7928	KESS	18
20	REV. GATE	7913	KESS	N/A
21	SMADS	8803	KE	1
22	S. CLOCK	98918	KE	6
23	EMERGENCY LT		KE	4



**NOTES:**

- FOR VENDOR AND ADDFARE INSTALLATION SEE 931-4002.
- FOR SMADS INSTALLATION SEE 931-4001.
- FOR ENTRY, EXIT AND REVERSIBLE GATE INSTALLATION SEE 931-4003.
- FOR BI-DIRECTIONAL SERVICE GATE INSTALLATION SEE 931-4005.
- FOR A TYPICAL MEZZANINE INSTALLATION SEE 931-4000.
- CIRCUIT BREAKERS WITH COMMON NEUTRAL:  
3, 7 & 9; 13, 15 & 17; 19 & 21; 2, 4 & 6; 10 & 12; 14, 16 & 18.

**MEZZANINE NO. 78**

NOTICE OF PROPRIETARY RIGHTS IN DATA  
THE DATA CONTAINED HEREIN IS PROPRIETARY TO CUBIC AUTOMATIC REVENUE COLLECTION GROUP/PRINCE GEORGES DIVISION. THIS DATA SHALL NOT BE REPRODUCED, COPIED, TRANSMITTED, OR USED BY ANY THIRD PARTY FOR ANY PURPOSE EXCEPT AS SPECIFICALLY AUTHORIZED IN WRITING BY CUBIC/AR.

SEE SEPARATE PL WHEN ITEM NUMBERS ARE USED (REF DESIGNATOR MAY BE USED IN LIEU OF ITEM NUMBERS)	UNLESS OTHERWISE SPECIFIED HOLE DIA TOLERANCES ARE: .0125 THRU .125 +.004 - .001 .126 THRU .250 +.005 - .001 .251 THRU .500 +.006 - .001 .501 THRU 1.000 +.008 - .001	UNLESS OTHERWISE SPECIFIED DIMENSIONS ARE IN INCHES	ENGINE: BRYAN FINE DATE: 24 OCT 1978 FILE NO.: 931-4024 PROJECT: PRINCE GEORGES STATION MEZZANINE LAYOUT SCALE: 1/4" = 1'-0"
NEXT ASSY: XXX-XXXX/XMX	TOLERANCES: LINEAR .001 ANGULAR .010	SCALE: 1/4" = 1'-0"	CUBIC AUTOMATIC REVENUE COLLECTION GROUP/PRINCE GEORGES DIVISION 931-4024 A
DO NOT SCALE DRAWING	DATE: 1/1/78	SCALE: 1/4" = 1'-0"	SHEET 3 OF 7